

A2635

Leader in Biomolecular Solutions for Life Science



Cyclin A1/A2 Rabbit mAb

Catalog No.: A2635

Recombinant

Basic Information

Observed MW

52 kDa (Cyclin A1)/49 kDa (Cyclin A2)

Calculated MW

49 kDa/52 kDa

Category

Monoclonal Antibody

Applications

WB, IP, ELISA

Cross-Reactivity

Human, Mouse

CloneNo number

ARC2642

Background

The protein encoded by this gene belongs to the highly conserved cyclin family, whose members function as regulators of the cell cycle. This protein binds and activates cyclin-dependent kinase 2 and thus promotes transition through G1/S and G2/M. The protein encoded by this gene belongs to the highly conserved cyclin family, whose members are characterized by a dramatic periodicity in protein abundance through the cell cycle. Cyclins function as regulators of CDK kinases. Different cyclins exhibit distinct expression and degradation patterns which contribute to the temporal coordination of each mitotic event. The cyclin encoded by this gene was shown to be expressed in testis and brain, as well as in several leukemic cell lines, and is thought to primarily function in the control of the germline meiotic cell cycle. This cyclin binds both CDK2 and CDC2 kinases, which give two distinct kinase activities, one appearing in S phase, the other in G2, and thus regulate separate functions in cell cycle. This cyclin was found to bind to important cell cycle regulators, such as Rb family proteins, transcription factor E2F-1, and the p21 family proteins. Multiple transcript variants encoding different isoforms have been found for this gene.

Recommended Dilutions

WB 1:1000 - 1:5000**IP** 0.5 µg-4 µg antibody for
400 µg-600 µg extracts
of whole cells**ELISA** Recommended starting
concentration is 1
µg/mL. Please optimize
the concentration
based on your specific
assay requirements.

Immunogen Information

Gene ID
890/8900**Swiss Prot**
P20248/P78396

Immunogen

Recombinant protein (or fragment). This information is considered to be commercially sensitive.

Synonyms

CCN1; CCNA; CT146; Cyclin A1/A2

Product Information

Source
Rabbit**Isotype**
IgG**Purification**
Affinity purification

Storage

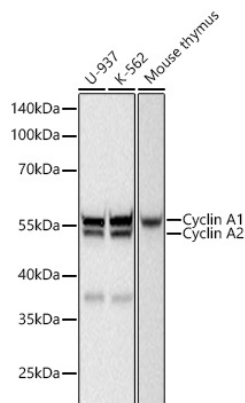
Store at -20°C. Avoid freeze / thaw cycles.

Buffer: PBS containing 50% glycerol and 0.05% BSA, preserved with proclin300 or sodium azide (as specified on the Certificate of Analysis), pH 7.3.

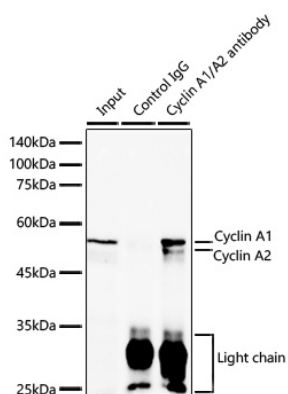
Contact

 www.abclonal.com

Validation Data



Western blot analysis of various lysates using Cyclin A1/A2 Rabbit mAb (A2635) at 1:5000 dilution incubated at room temperature for 1.5 hours.
Secondary antibody: HRP-conjugated Goat anti-Rabbit IgG (H+L) (AS014) at 1:10000 dilution.
Lysates/proteins: 25 µg per lane.
Blocking buffer: 3% nonfat dry milk in TBST.
Detection: ECL Basic Kit (RM00020).
Exposure time: 90 s.



Immunoprecipitation analysis of 600 µg extracts of Mouse thymus using 3 µg Cyclin A1/A2 Rabbit mAb (A2635). Western blot was performed from the immunoprecipitate using Cyclin A1/A2 Rabbit mAb (A2635) at a dilution of 1:1000.