

A26200

Leader in Biomolecular Solutions for Life Science



Ki67 Rabbit mAb

Catalog No.: A26200

Recombinant

Basic Information

Observed MW

359kDa以下

Calculated MW

351kDa

Category

Monoclonal Antibody

Applications

WB,IHC-P,ELISA,FC (intra)

Cross-Reactivity

Mouse,Rat

Background

Predicted to enable protein C-terminus binding activity. Involved in regulation of chromatin organization. Acts upstream of or within cholangiocyte proliferation; hepatocyte proliferation; and meiotic cell cycle. Located in chromosome; cytoplasm; and nucleolus. Is expressed in several structures, including alimentary system; brain; genitourinary system; sensory organ; and skin. Human ortholog(s) of this gene implicated in Crohn's disease; breast cancer; human immunodeficiency virus infectious disease; and pancreatic cancer. Orthologous to human MKI67 (marker of proliferation Ki-67).

Recommended Dilutions

WB 1:2000 - 1:6000

IHC-P 1:1000 - 1:5000

FC (intra) 1:500 - 1:1000

ELISA Recommended starting concentration is 1 µg/mL. Please optimize the concentration based on your specific assay requirements.

Immunogen Information

Gene ID

17345

Swiss Prot

E9PVX6

Immunogen

Recombinant protein (or fragment). This information is considered to be commercially sensitive.

Synonyms

Ki67; Ki-67; D630048A14Rik

Product Information

Source

Rabbit

Isotype

IgG

Purification

Affinity purification

Storage

Store at -20°C. Avoid freeze / thaw cycles.

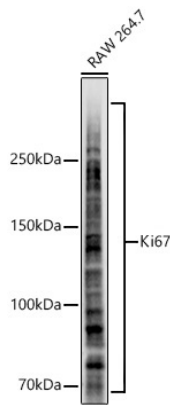
Buffer: PBS with 0.09% Sodium azide, 0.05% BSA, 50% glycerol, pH7.3.

Contact

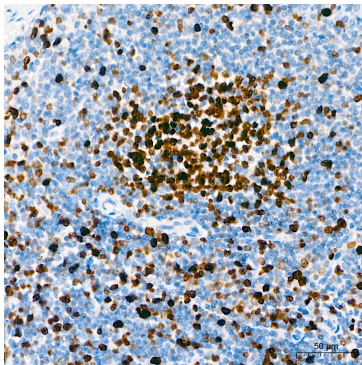


www.abclonal.com

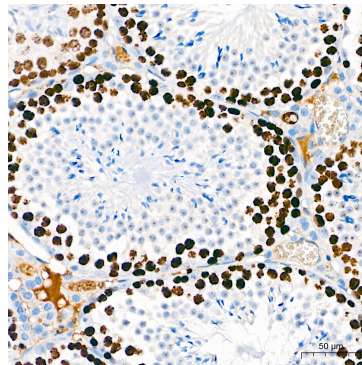
Validation Data



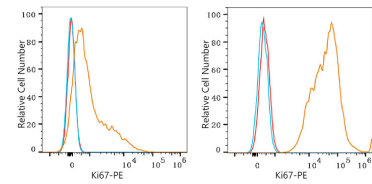
Western blot analysis of lysates from RAW 264.7 cells using Ki67 Rabbit mAb (A26200) at 1:5000 dilution incubated overnight at 4°C.
 Secondary antibody: HRP-conjugated Goat anti-Rabbit IgG (H+L) (AS014) at 1:10000 dilution.
 Lysates/proteins: 25 µg per lane.
 Blocking buffer: 3% nonfat dry milk in TBST.
 Detection: ECL Basic Kit (RM00020).
 Exposure time: 20s.



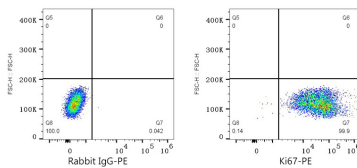
Immunohistochemistry analysis of paraffin-embedded Rat spleen tissue using Ki67 Rabbit mAb (A26200) at a dilution of 1:3600 (40x lens). High pressure antigen retrieval performed with 0.01M Citrate Buffer(pH 6.0) prior to IHC staining.



Immunohistochemistry analysis of paraffin-embedded Mouse testis tissue using Ki67 Rabbit mAb (A26200) at a dilution of 1:3600 (40x lens). High pressure antigen retrieval performed with 0.01M Citrate Buffer(pH 6.0) prior to IHC staining.



Flow cytometry: 1×10^6 C57BL/6 mouse splenocytes (Low Expression, left) and RAW 264.7 cells (right) were intracellularly-stained with Ki67 Rabbit mAb (A26200, 2 µg/mL, orange line) or Rabbit IgG isotype control (AC042, 2 µg/mL, blue line), followed by PE Donkey anti-Rabbit pAb. Non-fluorescently stained cells were used as blank control (red line).



Flow cytometry: 1×10^6 RAW 264.7 cells were intracellularly-stained with Rabbit IgG isotype control (AC042, 2 µg/mL, left) or Ki67 Rabbit mAb (A26200, 2 µg/mL, right), followed by PE Donkey anti-Rabbit pAb.