

A25875

Leader in Biomolecular Solutions for Life Science



# Dopamine Transporter/DAT Rabbit mAb

Catalog No.: A25875

Recombinant

## Basic Information

### Observed MW

70-85kDa

### Calculated MW

68kDa

### Category

SMab Recombinant Monoclonal  
Antibody

### Applications

WB,IHC-P,ELISA

### Cross-Reactivity

Mouse,Rat

### CloneNo number

ARC66721

## Background

This gene encodes a dopamine transporter which is a member of the sodium- and chloride-dependent neurotransmitter transporter family. The 3' UTR of this gene contains a 40 bp tandem repeat, referred to as a variable number tandem repeat or VNTR, which can be present in 3 to 11 copies. Variation in the number of repeats is associated with idiopathic epilepsy, attention-deficit hyperactivity disorder, dependence on alcohol and cocaine, susceptibility to Parkinson disease and protection against nicotine dependence.

## Recommended Dilutions

**WB** 1:1000 - 1:2000

**IHC-P** 1:2000 - 1:20000

**ELISA** Recommended starting concentration is 1 µg/mL. Please optimize the concentration based on your specific assay requirements.

## Immunogen Information

### Gene ID

6531

### Swiss Prot

Q01959

### Immunogen

A synthetic peptide corresponding to a sequence within amino acids 1-100 of human Dopamine Transporter/DAT (NP\_001035.1).

### Synonyms

DAT; DAT1; PKDYS; PKDYS1

## Contact

 [www.abclonal.com](http://www.abclonal.com)

## Product Information

### Source

Rabbit

### Isotype

IgG

### Purification

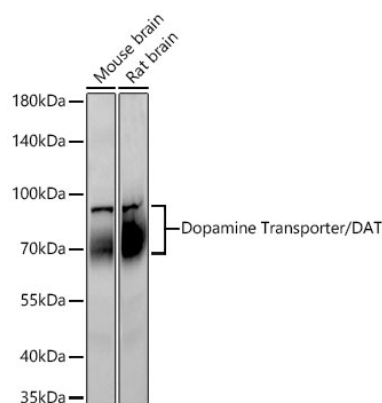
Affinity purification

### Storage

Store at -20°C. Avoid freeze / thaw cycles.

Buffer: PBS with 0.05% proclin300,0.05% BSA,50% glycerol,pH7.3.

## Validation Data



Western blot analysis of various lysates using Dopamine Transporter/DAT Rabbit mAb (A25875) at 1:1000 dilution incubated overnight at 4°C.

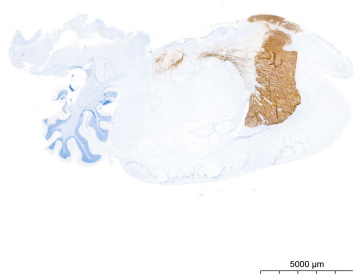
Secondary antibody: HRP-conjugated Goat anti-Rabbit IgG (H+L) (AS014) at 1:10000 dilution.

Lysates/proteins: 30 µg per lane.

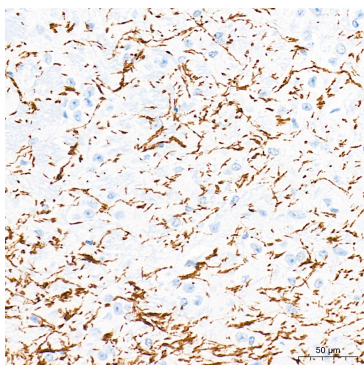
Blocking buffer: 3% nonfat dry milk in TBST.

Detection: ECL Basic Kit (RM00020).

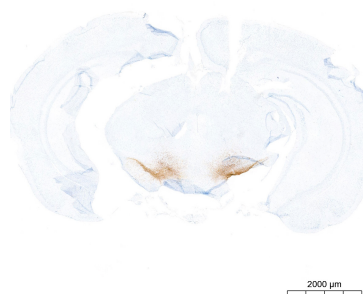
Exposure time: 45s.



Immunohistochemistry analysis of paraffin-embedded Rat brain tissue using Dopamine Transporter/DAT Rabbit mAb (A25875) at a dilution of 1:2000 (1x lens). High pressure antigen retrieval performed with 0.01M Tris-EDTA Buffer (pH 9.0) prior to IHC staining.



Immunohistochemistry analysis of paraffin-embedded Mouse brain tissue using Dopamine Transporter/DAT Rabbit mAb (A25875) at a dilution of 1:10000 (40x lens). High pressure antigen retrieval performed with 0.01M Tris-EDTA Buffer (pH 9.0) prior to IHC staining.



Immunohistochemistry analysis of paraffin-embedded Mouse brain tissue using Dopamine Transporter/DAT Rabbit mAb (A25875) at a dilution of 1:10000 (2x lens). High pressure antigen retrieval performed with 0.01M Tris-EDTA Buffer (pH 9.0) prior to IHC staining.