

A2587

Leader in Biomolecular Solutions for Life Science



## [KO Validated] APEX1/APE1 Rabbit pAb

Catalog No.: A2587

**KO** Validated

1 Publications

### Basic Information

#### Observed MW

39kDa

#### Calculated MW

36kDa

#### Category

Polyclonal Antibody

#### Applications

WB,IF/ICC,IP,ELISA

#### Cross-Reactivity

Human

### Background

The APEX gene encodes the major AP endonuclease in human cells. It encodes the APEX endonuclease, a DNA repair enzyme with apurinic/apyrimidinic (AP) activity. Such AP activity sites occur frequently in DNA molecules by spontaneous hydrolysis, by DNA damaging agents or by DNA glycosylases that remove specific abnormal bases. The AP sites are the most frequent pre-mutagenic lesions that can prevent normal DNA replication. Splice variants have been found for this gene; all encode the same protein. Disruptions in the biological functions related to APEX are associated with many various malignancies and neurodegenerative diseases.

### Recommended Dilutions

**WB** 1:500 - 1:2000

**IF/ICC** 1:50 - 1:100

**IP** 0.5µg-4µg antibody for  
200µg-400µg extracts  
of whole cells

**ELISA** Recommended starting  
concentration is 1  
µg/mL. Please optimize  
the concentration  
based on your specific  
assay requirements.

### Contact

 [www.abclonal.com](http://www.abclonal.com)

### Immunogen Information

#### Gene ID

328

#### Swiss Prot

P27695

#### Immunogen

Recombinant protein (or fragment). This information is considered to be commercially sensitive.

#### Synonyms

APE; APX; APE1; APEN; APEX; HAP1; REF1; E1

### Product Information

#### Source

Rabbit

#### Isotype

IgG

#### Purification

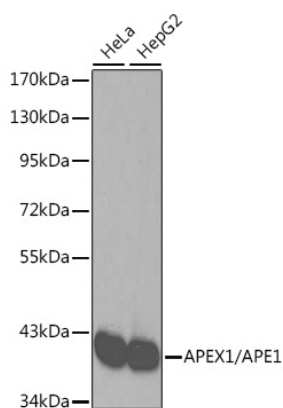
Affinity purification

#### Storage

Store at -20°C. Avoid freeze / thaw cycles.

Buffer: PBS containing 50% glycerol, preserved with proclin300 or sodium azide (as specified on the Certificate of Analysis), pH 7.3.

## Validation Data

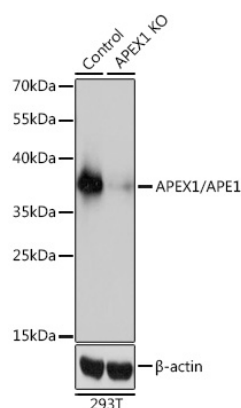


Western blot analysis of various lysates using [KO Validated] APEX1/APE1 Rabbit pAb (A2587).

Secondary antibody: HRP-conjugated Goat anti-Rabbit IgG (H+L) (AS014) at 1:10000 dilution.

Lysates/proteins: 25µg per lane.

Blocking buffer: 3% nonfat dry milk in TBST.



Western blot analysis of lysates from wild type (WT) and APEX1/APE1 knockout (KO) 293T cells, using [KO Validated] APEX1/APE1 Rabbit pAb (A2587) at 1:3000 dilution.

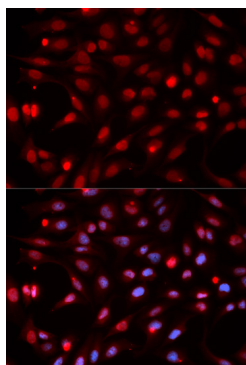
Secondary antibody: HRP-conjugated Goat anti-Rabbit IgG (H+L) (AS014) at 1:10000 dilution.

Lysates/proteins: 25µg per lane.

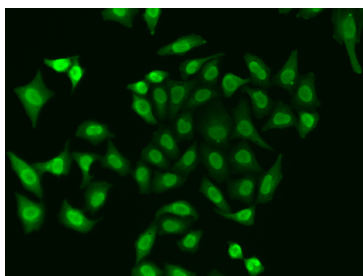
Blocking buffer: 3% nonfat dry milk in TBST.

Detection: ECL Basic Kit (RM00020).

Exposure time: 1s.

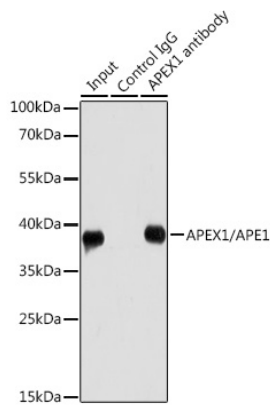


Immunofluorescence analysis of HeLa cells using [KO Validated] APEX1/APE1 Rabbit pAb (A2587). Secondary antibody: Cy3-conjugated Goat anti-Rabbit IgG (H+L) (AS007) at 1:500 dilution. Blue: DAPI for nuclear staining.



Immunofluorescence analysis of A549 cells using [KO Validated] APEX1/APE1 Rabbit pAb (A2587). Secondary antibody: Cy3-conjugated Goat anti-Rabbit IgG (H+L) (AS007) at 1:500 dilution.

# Validation Data



Immunoprecipitation analysis of 200 µg extracts of HeLa cells using 1 µg APEX1/APE1 antibody (A2587). Western blot was performed from the immunoprecipitate using APEX1/APE1 antibody (A2587) at a dilution of 1:1000.