

A25857

Leader in Biomolecular Solutions for Life Science



## ICAM-1/CD54 Rabbit mAb

Catalog No.: A25857

Recombinant

### Basic Information

#### Observed MW

95kDa

#### Calculated MW

60kDa

#### Category

SMab Recombinant Monoclonal  
Antibody

#### Applications

WB,IHC-P,FC,ELISA

#### Cross-Reactivity

Rat

#### CloneNo number

ARC66078

### Recommended Dilutions

**WB** 1:5000 - 1:20000

**IHC-P** 1:200 - 1:800

**FC** 1:500 - 1:1000

**ELISA** Recommended starting concentration is 1 µg/mL. Please optimize the concentration based on your specific assay requirements.

### Contact



[www.abclonal.com](http://www.abclonal.com)

### Background

Enables integrin binding activity. Involved in several processes, including cellular response to cytokine stimulus; cellular response to lipid; and gonad development. Located in cell surface; extracellular space; and plasma membrane. Used to study diabetic angiopathy; mesenteric vascular occlusion; nephritis; pre-eclampsia; and uveitis. Biomarker of several diseases, including cerebrovascular disease (multiple); colitis (multiple); kidney failure (multiple); lung disease (multiple); and pancreatitis (multiple). Human ortholog(s) of this gene implicated in several diseases, including autoimmune disease (multiple); biliary atresia; diabetic retinopathy; inflammatory bowel disease (multiple); and liver cirrhosis. Orthologous to human ICAM1 (intercellular adhesion molecule 1).

### Immunogen Information

#### Gene ID

25464

#### Swiss Prot

Q00238

#### Immunogen

Recombinant protein (or fragment). This information is considered to be commercially sensitive.

#### Synonyms

CD54; ICAM

### Product Information

#### Source

Rabbit

#### Isotype

IgG

#### Purification

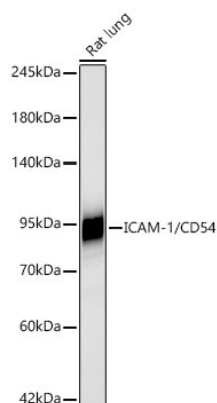
Affinity purification

#### Storage

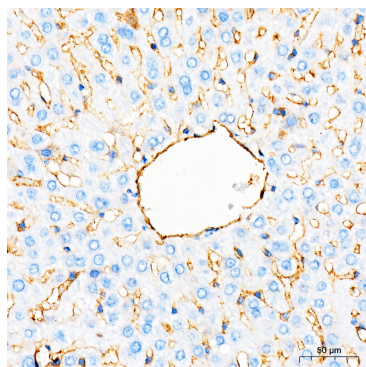
Store at -20°C. Avoid freeze / thaw cycles.

Buffer: PBS containing 50% glycerol and 0.05% BSA, preserved with proclin300 or sodium azide (as specified on the Certificate of Analysis), pH 7.3.

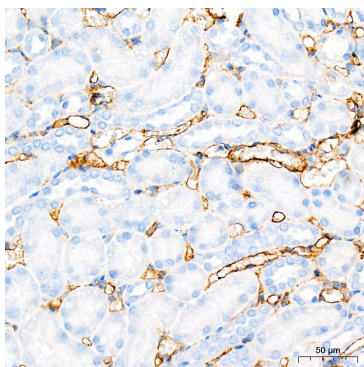
## Validation Data



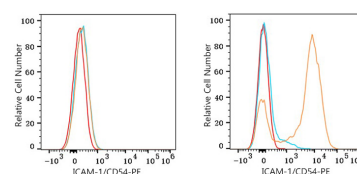
Western blot analysis of lysates from Rat lung using ICAM-1/CD54 Rabbit mAb (A25857) at 1:5000 dilution incubated overnight at 4°C.  
Secondary antibody: HRP-conjugated Goat anti-Rabbit IgG (H+L) (AS014) at 1:10000 dilution.  
Lysates/proteins: 25 µg per lane.  
Blocking buffer: 3% nonfat dry milk in TBST.  
Detection: ECL Basic Kit (RM00020).  
Exposure time: 30s.



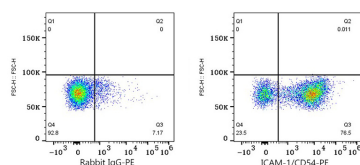
Immunohistochemistry analysis of paraffin-embedded Rat liver tissue using ICAM-1/CD54 Rabbit mAb (A25857) at a dilution of 1:200 (40x lens). High pressure antigen retrieval performed with 0.01M Citrate buffer (pH 6.0) prior to IHC staining.



Immunohistochemistry analysis of paraffin-embedded Rat kidney tissue using ICAM-1/CD54 Rabbit mAb (A25857) at a dilution of 1:200 (40x lens). High pressure antigen retrieval performed with 0.01M Citrate buffer (pH 6.0) prior to IHC staining.



Flow cytometry:  $1 \times 10^6$  293T cells (negative control, left) and Rat splenocytes (right) were surface-stained with ICAM-1/CD54 Rabbit mAb (A25857, 2 µg/mL, orange line) or Rabbit IgG isotype control (AC042, 2 µg/mL, blue line), followed by PE Donkey anti-rabbit pAb staining. Non-fluorescently stained cells were used as blank control (red line).



Flow cytometry:  $1 \times 10^6$  Rat splenocytes were surface-stained with Rabbit IgG isotype control (AC042, 2 µg/mL, left) or ICAM-1/CD54 Rabbit mAb (A25857, 2 µg/mL, right), followed by PE Donkey anti-rabbit pAb staining.