

A25848

Leader in Biomolecular Solutions for Life Science



CCL4 Rabbit pAb

Catalog No.: A25848

Basic Information

Observed MW

12kDa

Calculated MW

10kDa

Category

Polyclonal Antibody

Applications

WB, ELISA

Cross-Reactivity

Mouse

Background

Predicted to enable chemokine receptor binding activity and identical protein binding activity. Acts upstream of or within cellular response to xenobiotic stimulus. Located in extracellular space. Is expressed in central nervous system; genitourinary system; and retina. Human ortholog(s) of this gene implicated in acquired immunodeficiency syndrome and human immunodeficiency virus infectious disease. Orthologous to several human genes including CCL4L2 (C-C motif chemokine ligand 4 like 2).

Recommended Dilutions

WB 1:500 - 1:1000

ELISA Recommended starting concentration is 1 µg/mL. Please optimize the concentration based on your specific assay requirements.

Immunogen Information

Gene ID
20303

Swiss Prot
P14097

Immunogen

Recombinant protein (or fragment). This information is considered to be commercially sensitive.

Synonyms

Act-2; Mip1b; Scya4; MIP-1B; AT744.1

Contact

 www.abclonal.com

Product Information

Source
Rabbit

Isotype
IgG

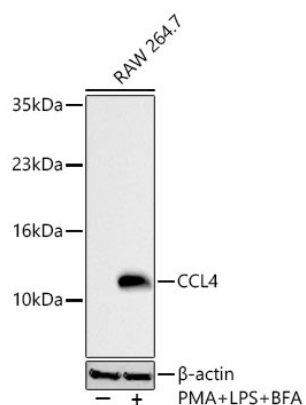
Purification
Affinity purification

Storage

Store at -20°C. Avoid freeze / thaw cycles.

Buffer: PBS containing 50% glycerol, preserved with proclin300 or sodium azide (as specified on the Certificate of Analysis), pH 7.3.

Validation Data



Western blot analysis of lysates from RAW 264.7 cells using CCL4 Rabbit pAb (A25848) at 1:1000 dilution incubated overnight at 4°C. Raw264.7 cells were treated by PMA (80 nM) at 37°C for overnight and LPS (1 µg/ml) at 37°C for 6 hours and Brefeldin A for 3 hours of stimulation.

Secondary antibody: HRP-conjugated Goat anti-Rabbit IgG (H+L) (AS014) at 1:10000 dilution.

Lysates/proteins: 30 µg per lane.

Blocking buffer: 3 % nonfat dry milk in TBST.

Detection: ECL Basic Kit (RM00020).

Exposure time: 30s.