

A25822

Leader in Biomolecular Solutions for Life Science



VCAM-1/CD106 Rabbit mAb

Catalog No.: A25822 **Recombinant**

Basic Information

Observed MW

100 kDa

Calculated MW

38 kDa/81 kDa

Category

SMab Recombinant Monoclonal Antibody

Applications

WB,FC,ELISA

Cross-Reactivity

Mouse,Rat

CloneNo number

ARC65686

Recommended Dilutions

WB 1:1000 - 1:2000

FC 1:500 - 1:1000

ELISA Recommended starting concentration is 1 µg/mL. Please optimize the concentration based on your specific assay requirements.

Contact

 www.abclonal.com

Background

Predicted to enable integrin binding activity and primary amine oxidase activity. Acts upstream of or within several processes, including cellular response to glucose stimulus; chorio-allantoic fusion; and heterophilic cell-cell adhesion via plasma membrane cell adhesion molecules. Located in apical plasma membrane. Is expressed in several structures, including brain; embryo mesenchyme; extraembryonic component; heart; and hemolymphoid system. Human ortholog(s) of this gene implicated in hypertension. Orthologous to human VCAM1 (vascular cell adhesion molecule 1).

Immunogen Information

Gene ID

22329

Swiss Prot

P29533

Immunogen

Recombinant protein (or fragment). This information is considered to be commercially sensitive.

Synonyms

CD106; Vcam-1

Product Information

Source

Rabbit

Isotype

IgG

Purification

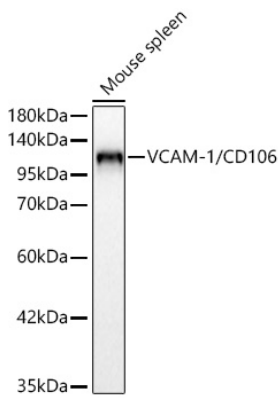
Affinity purification

Storage

Store at -20°C. Avoid freeze / thaw cycles.

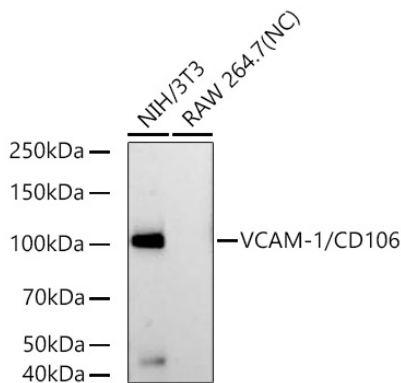
Buffer: PBS containing 50% glycerol and 0.05% BSA, preserved with proclin300 or sodium azide (as specified on the Certificate of Analysis), pH 7.3.

Validation Data



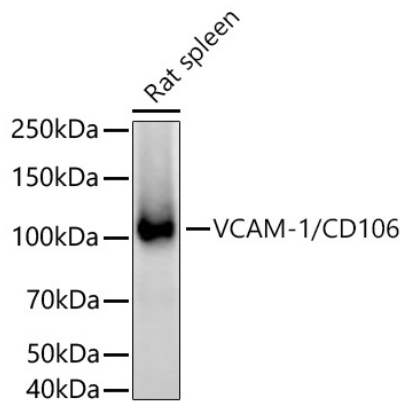
Western blot analysis of lysates from Mouse spleen using VCAM-1/CD106 Rabbit mAb (A25822) at 1:1000 dilution incubated overnight at 4°C.
Secondary antibody: HRP-conjugated Goat anti-Rabbit IgG (H+L) (AS014) at 1:10000 dilution.

Lysates/proteins: 25 µg per lane.
Blocking buffer: 3% nonfat dry milk in TBST.
Detection: ECL Basic Kit (RM00020).
Exposure time: 60 s.



Western blot analysis of various lysates using VCAM-1/CD106 Rabbit mAb (A25822) at 1:1000 dilution incubated overnight at 4°C.
Secondary antibody: HRP-conjugated Goat anti-Rabbit IgG (H+L) (AS014) at 1:10000 dilution.

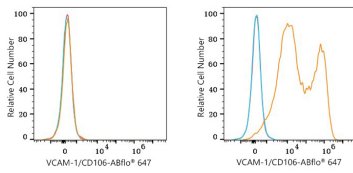
Lysates/proteins: 25 µg per lane.
Blocking buffer: 3% nonfat dry milk in TBST.
Detection: ECL Basic Kit (RM00020).
Negative control (NC): RAW 264.7
Exposure time: 90 s.



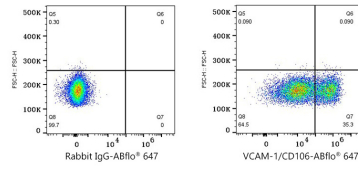
Western blot analysis of lysates from Rat spleen using VCAM-1/CD106 Rabbit mAb (A25822) at 1:1000 dilution incubated overnight at 4°C.
Secondary antibody: HRP-conjugated Goat anti-Rabbit IgG (H+L) (AS014) at 1:10000 dilution.

Lysates/proteins: 25 µg per lane.
Blocking buffer: 3% nonfat dry milk in TBST.
Detection: ECL Basic Kit (RM00020).
Exposure time: 45 s.

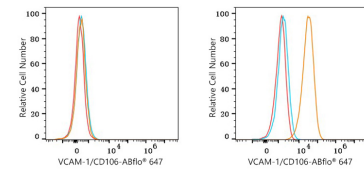
Validation Data



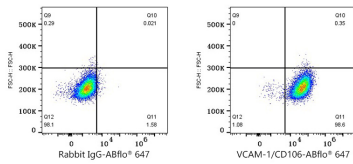
Flow cytometry: 1×10^6 293T cells (negative control, left) and 293T (Transfection, right) cells were surface-stained with VCAM-1/CD106 Rabbit mAb (A25822, 2 $\mu\text{g}/\text{mL}$, orange line) or Rabbit IgG isotype control (AC042, 2 $\mu\text{g}/\text{mL}$, blue line), followed by Alexa Fluor® 647 conjugated goat anti-rabbit pAb staining. Non-fluorescently stained cells were used as blank control (red line).



Flow cytometry: 1×10^6 293T (Transfection) cells were surface-stained with Rabbit IgG isotype control (AC042, 2 $\mu\text{g}/\text{mL}$, left) or VCAM-1/CD106 Rabbit mAb (A25822, 2 $\mu\text{g}/\text{mL}$, right), followed by Alexa Fluor® 647 conjugated goat anti-rabbit pAb staining.



Flow cytometry: 1×10^6 RAW 264.7 cells (negative control, left) and MS1 cells (right) were surface-stained with VCAM-1/CD106 Rabbit mAb (A25822, 2 $\mu\text{g}/\text{mL}$, orange line) or Rabbit IgG isotype control (AC042, 2 $\mu\text{g}/\text{mL}$, blue line), followed by Alexa Fluor® 647 conjugated goat anti-rabbit pAb staining. Non-fluorescently stained cells were used as blank control (red line).



Flow cytometry: 1×10^6 MS1 cells were surface-stained with Rabbit IgG isotype control (AC042, 2 $\mu\text{g}/\text{mL}$, left) or VCAM-1/CD106 Rabbit mAb (A25822, 2 $\mu\text{g}/\text{mL}$, right), followed by Alexa Fluor® 647 conjugated goat anti-rabbit pAb staining.