

A25724

Leader in Biomolecular Solutions for Life Science



PE Rabbit anti-Human CD301/CLEC10A mAb

Catalog No.: A25724

Basic Information

Observed MW

Refer to figures

Calculated MW

28kDa/32kDa/35kDa

Category

SMab Recombinant Monoclonal
Antibody

Applications

FC

Cross-Reactivity

Human

CloneNo number

ARC61381-PE

Conjugate

PE. Ex:565nm. Em:574nm.

Recommended Dilutions

FC 5 μ l per 10^6 cells in
100 μ l volume

Contact



www.abclonal.com

Background

This gene encodes a member of the C-type lectin/C-type lectin-like domain (CTL/CTLD) superfamily. Members of this family share a common protein fold and have diverse functions, such as cell adhesion, cell-cell signalling, glycoprotein turnover, and roles in inflammation and immune response. The encoded type 2 transmembrane protein may function as a cell surface antigen. Two transcript variants encoding distinct isoforms have been identified for this gene.

Immunogen Information

Gene ID

10462

Swiss Prot

Q8IUN9

Immunogen

Recombinant fusion protein containing a sequence corresponding to amino acids 61-316 of human CD301/CLEC10A (NP_878910.1).

Synonyms

HML; MGL; HML2; CD301; CLECSF13; CLECSF14

Product Information

Source

Rabbit

Isotype

IgG

Purification

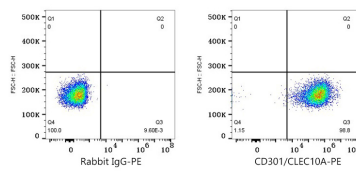
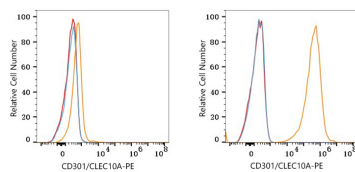
Affinity purification

Storage

Store at 2-8°C. Avoid freeze.

Buffer: PBS with 0.03% proclin300,0.2% BSA,pH7.3.

Validation Data



Flow cytometry: 1×10^6 293T cells (negative control,left) and 293T (Transfection,right) cells were surface-stained with PE Rabbit anti-Human CD301/CLEC10A mAb (A25724,5 μ l/Test,orange line) or PE Rabbit IgG isotype control(A24172,5 μ l/Test,blue line). Non-fluorescently stained cells were used as blank control (red line).

Flow cytometry: 1×10^6 293T (Transfection) cells were surface-stained with PE Rabbit IgG isotype control(A24172,5 μ l/Test,left) or PE Rabbit anti-Human CD301/CLEC10A mAb (A25724,5 μ l/Test,right).