

A25684

Leader in Biomolecular Solutions for Life Science



# IFN-gamma Rabbit mAb

Catalog No.: A25684

Recombinant

## Basic Information

### Observed MW

17kDa

### Calculated MW

19kDa

### Category

SMab Recombinant Monoclonal  
Antibody

### Applications

WB,ELISA,FC (intra)

### Cross-Reactivity

Human

### CloneNo number

ARC67550

## Background

This gene encodes a soluble cytokine that is a member of the type II interferon class. The encoded protein is secreted by cells of both the innate and adaptive immune systems. The active protein is a homodimer that binds to the interferon gamma receptor which triggers a cellular response to viral and microbial infections. Mutations in this gene are associated with an increased susceptibility to viral, bacterial and parasitic infections and to several autoimmune diseases.

## Recommended Dilutions

**WB** 1:1000 - 1:2000

**FC (intra)** 1:100 - 1:500

**ELISA** Recommended starting concentration is 1 µg/mL. Please optimize the concentration based on your specific assay requirements.

## Immunogen Information

### Gene ID

3458

### Swiss Prot

P01579

### Immunogen

Recombinant fusion protein containing a sequence corresponding to amino acids 24-166 of human IFN-gamma (NP\_000610.2).

### Synonyms

IFG; IFI; IMD69

## Contact

 [www.abclonal.com](http://www.abclonal.com)

## Product Information

### Source

Rabbit

### Isotype

IgG

### Purification

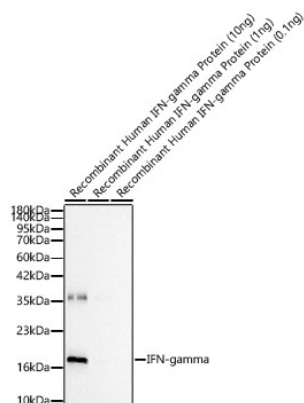
Affinity purification

### Storage

Store at -20°C. Avoid freeze / thaw cycles.

Buffer: PBS with 0.05% proclin300,0.05% BSA,50% glycerol,pH7.3.

## Validation Data



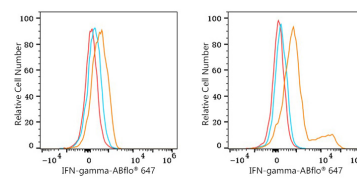
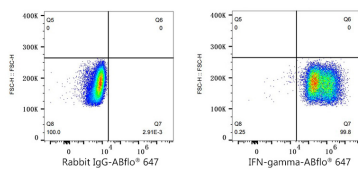
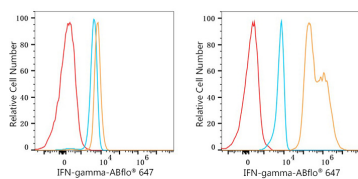
Western blot analysis of Active Recombinant Human IFN-gamma Protein (RP01038) using IFN-gamma Rabbit mAb (A25684) at 1:1000 dilution incubated overnight at 4°C. Secondary antibody: HRP-conjugated Goat anti-Rabbit IgG (H+L) (AS014) at 1:10000 dilution.

Lysates/proteins: 0.1ng - 10ng per lane.

Blocking buffer: 3% nonfat dry milk in TBST.

Detection: ECL Basic Kit (RM00020).

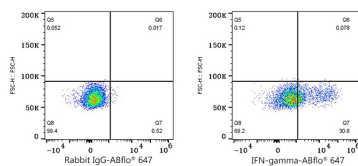
Exposure time: 45s.



Flow cytometry:  $1 \times 10^6$  293T cells (negative control, left) and 293T (Transfection, right) cells were intracellularly-stained with IFN-gamma Rabbit mAb (A25684, 2 µg/mL, orange line) or Rabbit IgG isotype control (AC042, 2 µg/mL, blue line), followed by Alexa Fluor® 647 conjugated goat anti-rabbit pAb staining. Non-fluorescently stained cells were used as blank control (red line).

Flow cytometry:  $1 \times 10^6$  293T (Transfection) cells were intracellularly-stained with Rabbit IgG isotype control (AC042, 2 µg/mL, left) or IFN-gamma Rabbit mAb (A25684, 2 µg/mL, right), followed by Alexa Fluor® 647 conjugated goat anti-rabbit pAb staining.

Flow cytometry:  $1 \times 10^6$  PBMC (negative control, left) and PBMC (treated with TPA+Ionomycin+Brefeldin A, right) were intracellularly-stained with IFN-gamma Rabbit mAb (A25684, 2 µg/mL, orange line) or Rabbit IgG isotype control (AC042, 2 µg/mL, blue line), followed by Alexa Fluor® 647 conjugated goat anti-rabbit pAb staining. Non-fluorescently stained cells were used as blank control (red line).



Flow cytometry:  $1 \times 10^6$  PBMC (treated with TPA+Ionomycin+Brefeldin A) were intracellularly-stained with Rabbit IgG isotype control (AC042, 2 µg/mL, left) or IFN-gamma Rabbit mAb (A25684, 2 µg/mL, right), followed by Alexa Fluor® 647 conjugated goat anti-rabbit pAb staining.

## Validation Data

---

µg/mL, left) or IFN-gamma Rabbit  
mAb (A25684, 2 µg/mL, right),  
followed by Alexa Fluor® 647  
conjugated goat anti-rabbit pAb  
staining.