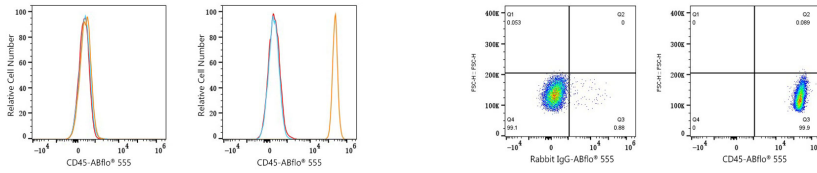


Validation Data



Flow cytometry: 1×10^6 293T cells (negative control, left) and Jurkat cells (right) were surface-stained with ABflo® 555 Rabbit anti-Human CD45 mAb (A25416, 5 μ l/Test, orange line) or ABflo® 555 Rabbit IgG isotype control (A25554, 5 μ l/Test, blue line). Non-fluorescently stained cells were used as blank control (red line).

Flow cytometry: 1×10^6 Jurkat cells were surface-stained with ABflo® 555 Rabbit IgG isotype control (A25554, 5 μ l/Test, left) or ABflo® 555 Rabbit anti-Human CD45 mAb (A25416, 5 μ l/Test, right).