

A25366

Leader in Biomolecular Solutions for Life Science



VE Cadherin Rabbit mAb

Catalog No.: A25366

Recombinant

Basic Information

Observed MW

Refer to figures

Calculated MW

88kDa

Category

SMab Recombinant Monoclonal
Antibody

Applications

IHC-P,FC,ELISA

Cross-Reactivity

Human

CloneNo number

ARC58061

Background

This gene encodes a classical cadherin of the cadherin superfamily. The encoded preproprotein is proteolytically processed to generate the mature glycoprotein. This calcium-dependent cell-cell adhesion molecule is comprised of five extracellular cadherin repeats, a transmembrane region and a highly conserved cytoplasmic tail. Functioning as a classical cadherin by imparting to cells the ability to adhere in a homophilic manner, this protein plays a role in endothelial adherens junction assembly and maintenance. This gene is located in a gene cluster in a region on the long arm of chromosome 16 that is involved in loss of heterozygosity events in breast and prostate cancer.

Recommended Dilutions

FC 1:50 - 1:200

IHC-P 1:500 - 1:1000

Immunogen Information

Gene ID

1003

Swiss Prot

P33151

Immunogen

Recombinant protein (or fragment). This information is considered to be commercially sensitive.

Synonyms

7B4; CD144

Contact



www.abclonal.com

Product Information

Source

Rabbit

Isotype

IgG

Purification

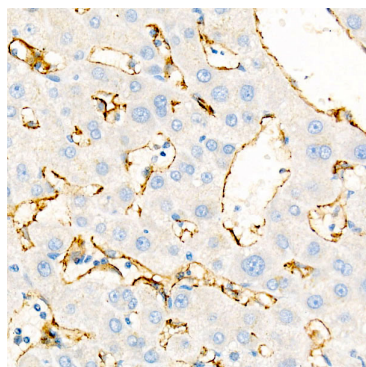
Affinity purification

Storage

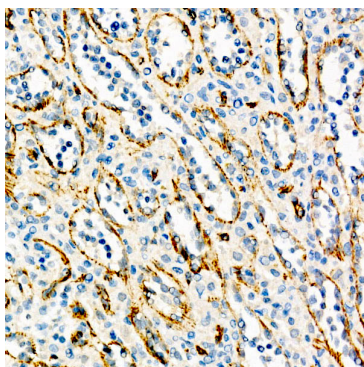
Store at -20°C. Avoid freeze / thaw cycles.

Buffer: PBS with 0.05% proclin300, 0.05% BSA, 50% glycerol, pH7.3.

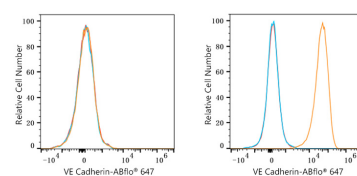
Validation Data



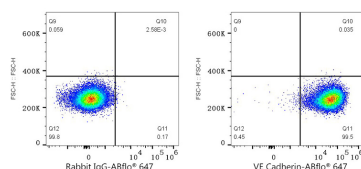
Immunohistochemistry analysis of paraffin-embedded Human liver tissue using VE Cadherin Rabbit mAb (A25366) at a dilution of 1:200 (40x lens). High pressure antigen retrieval performed with 0.01M Citrate Buffer(pH 6.0) prior to IHC staining.



Immunohistochemistry analysis of paraffin-embedded Human spleen tissue using VE Cadherin Rabbit mAb (A25366) at a dilution of 1:200 (40x lens). High pressure antigen retrieval performed with 0.01M Citrate Buffer(pH 6.0) prior to IHC staining.



Flow cytometry: 1×10^6 HeLa cells (negative control, left) and BeWo cells (right) were surface-stained with VE Cadherin Rabbit mAb (A25366, 2 $\mu\text{g}/\text{mL}$, orange line) or ABflo® 647 Rabbit IgG isotype control (A22070, 5 $\mu\text{l}/\text{Test}$, blue line), followed by Alexa Fluor® 647 conjugated goat anti-rabbit pAb staining. Non-fluorescently stained cells were used as blank control (red line).



Flow cytometry: 1×10^6 BeWo cells were surface-stained with ABflo® 647 Rabbit IgG isotype control (A22070, 5 $\mu\text{l}/\text{Test}$, left) or VE Cadherin Rabbit mAb (A25366, 2 $\mu\text{g}/\text{mL}$, right).