

A25252

Leader in Biomolecular Solutions for Life Science



AIM2 Rabbit pAb

Catalog No.: A25252

Basic Information

Observed MW

40kDa

Calculated MW

40kDa

Category

Polyclonal Antibody

Applications

WB,ELISA

Cross-Reactivity

Mouse

Background

Enables double-stranded DNA binding activity and identical protein binding activity. Involved in positive regulation of macromolecule metabolic process; pyroptosis; and regulation of defense response. Acts upstream of or within cellular response to interferon-beta. Located in cytoplasm. Part of AIM2 inflammasome complex. Orthologous to human AIM2 (absent in melanoma 2).

Recommended Dilutions

WB 1:500 - 1:1000

ELISA Recommended starting concentration is 1 µg/mL. Please optimize the concentration based on your specific assay requirements.

Immunogen Information

Gene ID

383619

Swiss Prot

Q91VJ1

Immunogen

Recombinant fusion protein containing a sequence corresponding to amino acids 158-354 of mouse AIM2(NP_001013801.2).

Synonyms

Gm1313; Ifi210; Aim2

Contact



www.abclonal.com

Product Information

Source

Rabbit

Isotype

IgG

Purification

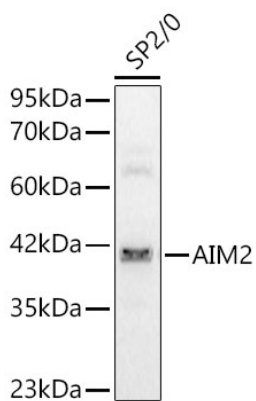
Affinity purification

Storage

Store at -20°C. Avoid freeze / thaw cycles.

Buffer: PBS with 0.05% proclin300,50% glycerol,pH7.3.

Validation Data



Western blot analysis of lysates from SP2/0 cells using AIM2 Rabbit pAb (A25252) at 1:1000 dilution.

Secondary antibody: HRP-conjugated Goat anti-Rabbit IgG (H+L) (AS014) at 1:10000 dilution.

Lysates/proteins: 25 µg per lane.

Blocking buffer: 3% nonfat dry milk in TBST.

Detection: ECL Basic Kit (RM00020).

Exposure time: 90s.