

A25239

Leader in Biomolecular Solutions for Life Science



# CCR5 Rabbit pAb

Catalog No.: A25239

## Basic Information

### Observed MW

Refer to figures

### Calculated MW

41kDa

### Category

Polyclonal Antibody

### Applications

ELISA,IF-P

### Cross-Reactivity

Mouse

## Background

This gene encodes a member of the beta chemokine receptor family, which is predicted to be a seven transmembrane protein similar to G protein-coupled receptors. This protein is expressed by T cells and macrophages, and is known to be an important co-receptor for macrophage-tropic virus, including HIV, to enter host cells. Defective alleles of this gene have been associated with the HIV infection resistance. The ligands of this receptor include monocyte chemoattractant protein 2 (MCP-2), macrophage inflammatory protein 1 alpha (MIP-1 alpha), macrophage inflammatory protein 1 beta (MIP-1 beta) and regulated on activation normal T expressed and secreted protein (RANTES). Expression of this gene was also detected in a promyeloblastic cell line, suggesting that this protein may play a role in granulocyte lineage proliferation and differentiation. This gene is located at the chemokine receptor gene cluster region. An allelic polymorphism in this gene results in both functional and non-functional alleles; the reference genome represents the functional allele. Two transcript variants encoding the same protein have been found for this gene.

## Recommended Dilutions

IF-P 1:50 - 1:200

**ELISA** Recommended starting concentration is 1 µg/mL. Please optimize the concentration based on your specific assay requirements.

## Immunogen Information

### Gene ID

1234

### Swiss Prot

P51681

### Immunogen

Synthetic peptide. This information is considered to be commercially sensitive.

### Synonyms

CKR5; CCR-5; CD195; CKR-5; CCCKR5; CMKBR5; IDDM22; CC-CKR-5; CCR5

## Contact

 [www.abclonal.com](http://www.abclonal.com)

## Product Information

### Source

Rabbit

### Isotype

IgG

### Purification

Affinity purification

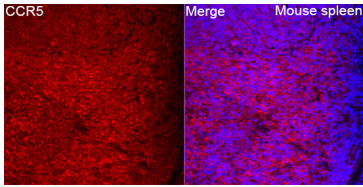
### Storage

Store at -20°C. Avoid freeze / thaw cycles.

Buffer: PBS containing 50% glycerol, preserved with proclin300 or sodium azide (as specified on the Certificate of Analysis), pH 7.3.

## Validation Data

---



Immunofluorescence analysis of paraffin-embedded Mouse spleen tissue using CCR5 Rabbit pAb(A25239) at a dilution of 1:100 (40x lens). Secondary antibody: Cy3 Goat Anti-Rabbit IgG (H+L)(AS007) at 1:500 dilution. Blue: DAPI for nuclear staining. Perform high pressure antigen retrieval with 0.01 M citrate buffer (pH 6.0) prior to IF staining.