

A25228

Leader in Biomolecular Solutions for Life Science



NOD2 Rabbit pAb

Catalog No.: A25228

Basic Information

Observed MW

115kDa

Calculated MW

115kDa

Category

Polyclonal Antibody

Applications

WB,IF/ICC,ELISA

Cross-Reactivity

Human,Mouse

Background

This gene is a member of the Nod1/Apaf-1 family and encodes a protein with two caspase recruitment (CARD) domains and six leucine-rich repeats (LRRs). The protein is primarily expressed in the peripheral blood leukocytes. It plays a role in the immune response to intracellular bacterial lipopolysaccharides (LPS) by recognizing the muramyl dipeptide (MDP) derived from them and activating the NFkB protein. Mutations in this gene have been associated with Crohn disease and Blau syndrome. Alternatively spliced transcript variants encoding distinct isoforms have been found for this gene.

Recommended Dilutions

WB 1:500 - 1:1000

IF/ICC 1:50 - 1:200

ELISA Recommended starting concentration is 1 µg/mL. Please optimize the concentration based on your specific assay requirements.

Immunogen Information

Gene ID

64127

Swiss Prot

Q9HC29

Immunogen

Recombinant Protein corresponding to a sequence within amino acids 28-270 of human NOD2 (NP_071445.1).

Synonyms

CD; ACUG; BLAU; IBD1; YAOS; BLAUS; NLRC2; NOD2B; CARD15; CLR16.3; PSORAS1; NOD2

Contact



www.abclonal.com

Product Information

Source

Rabbit

Isotype

IgG

Purification

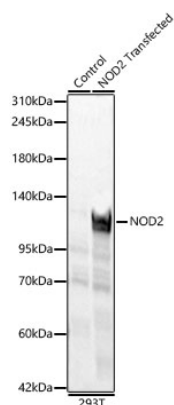
Affinity purification

Storage

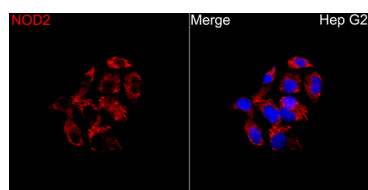
Store at -20°C. Avoid freeze / thaw cycles.

Buffer: PBS with 0.05% proclin300,50% glycerol,pH7.3.

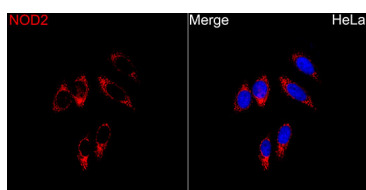
Validation Data



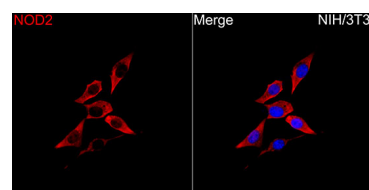
Western blot analysis of lysates from wild type (WT) and 293T cells transfected with NOD2 using NOD2 Rabbit pAb (A25228) at 1:1000 dilution. Secondary antibody: HRP-conjugated Goat anti-Rabbit IgG (H+L) (AS014) at 1:10000 dilution. Lysates/proteins: 40.5 µg per lane. Blocking buffer: 3% nonfat dry milk in TBST. Detection: ECL Basic Kit (RM00020). Exposure time: 8s.



Immunofluorescence analysis of Hep G2 cells using NOD2 Rabbit pAb (A25228) at a dilution of 1:100 (40x lens). Secondary antibody: Cy3-conjugated Goat anti-Rabbit IgG (H+L) (AS007) at 1:500 dilution. Blue: DAPI for nuclear staining.



Immunofluorescence analysis of HeLa cells using NOD2 Rabbit pAb (A25228) at a dilution of 1:100 (40x lens). Secondary antibody: Cy3-conjugated Goat anti-Rabbit IgG (H+L) (AS007) at 1:500 dilution. Blue: DAPI for nuclear staining.



Immunofluorescence analysis of NIH/3T3 cells using NOD2 Rabbit pAb (A25228) at a dilution of 1:100 (40x lens). Secondary antibody: Cy3-conjugated Goat anti-Rabbit IgG (H+L) (AS007) at 1:500 dilution. Blue: DAPI for nuclear staining.