

A25112

Leader in Biomolecular Solutions for Life Science



ABflo® 488 Rabbit anti-Human IFN-alpha/beta R2 mAb

Catalog No.: A25112

Basic Information

Observed MW

Calculated MW

58kDa/37kDa/27kDa

Category

SMab Recombinant Monoclonal
Antibody

Applications

FC

Cross-Reactivity

Human

CloneNo number

ARC63166-ABflo488

Conjugate

ABflo® 488. Ex:491nm. Em:516nm.

Recommended Dilutions

FC 5 µl per 10⁶ cells in
100 µl volume

Contact



www.abclonal.com

Background

The protein encoded by this gene is a type I membrane protein that forms one of the two chains of a receptor for interferons alpha and beta. Binding and activation of the receptor stimulates Janus protein kinases, which in turn phosphorylate several proteins, including STAT1 and STAT2. The protein belongs to the type II cytokine receptor family. Mutations in this gene are associated with Immunodeficiency 45.

Immunogen Information

Gene ID

3455

Swiss Prot

P48551

Immunogen

Recombinant fusion protein containing a sequence corresponding to amino acids 28-237 of human IFN-alpha/beta R2(NP_008896.2).

Synonyms

IFN-R; IMD45; IFNABR; IFNARB; IFN-R-2; IFN-alpha-REC; IFNAR2

Product Information

Source

Rabbit

Isotype

IgG

Purification

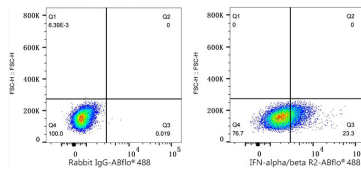
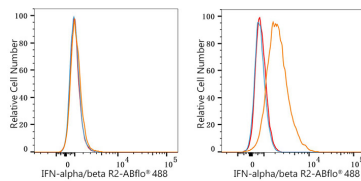
Affinity purification

Storage

Store at 2-8°C. Avoid freeze.

Buffer: PBS with 0.03% proclin300,0.2% BSA,pH7.3.

Validation Data



Flow cytometry: 1×10^6 T-47D cells (Low Expression, left) and U266 cells (right) were surface-stained with ABflo® 488 Rabbit anti-Human IFN- α /beta R2 mAb (A25112, 5 μ l/Test, orange line) or ABflo® 488 Rabbit IgG isotype control (A22069, 5 μ l/Test, blue line). Non-fluorescently stained cells were used as blank control (red line).

Flow cytometry: 1×10^6 U266 cells were surface-stained with ABflo® 488 Rabbit IgG isotype control (A22069, 5 μ l/Test, left) or ABflo® 488 Rabbit anti-Human IFN- α /beta R2 mAb (A25112, 5 μ l/Test, right).