

A25091

Leader in Biomolecular Solutions for Life Science



LIFR/CD118 Rabbit mAb

Catalog No.: A25091 **Recombinant**

Basic Information

Observed MW

Refer to figures

Calculated MW

124kDa

Category

SMab Recombinant Monoclonal Antibody

Applications

FC,ELISA

Cross-Reactivity

Human

CloneNo number

ARC65282

Background

This gene encodes a protein that belongs to the type I cytokine receptor family. This protein combines with a high-affinity converter subunit, gp130, to form a receptor complex that mediates the action of the leukemia inhibitory factor, a polyfunctional cytokine that is involved in cellular differentiation, proliferation and survival in the adult and the embryo. Mutations in this gene cause Schwartz-Jampel syndrome type 2, a disease belonging to the group of the bent-bone dysplasias. A translocation that involves the promoter of this gene, t(5;8)(p13;q12) with the pleiomorphic adenoma gene 1, is associated with salivary gland pleiomorphic adenoma, a common type of benign epithelial tumor of the salivary gland. Multiple splice variants encoding two different isoforms have been found for this gene.

Recommended Dilutions

FC 1:500 - 1:1000

ELISA Recommended starting concentration is 1 µg/mL. Please optimize the concentration based on your specific assay requirements.

Immunogen Information

Gene ID

3977

Swiss Prot

P42702

Immunogen

Recombinant fusion protein containing a sequence corresponding to amino acids 45-833 of human LIFR/CD118 (NP_002301.1).

Synonyms

SWS; SJS2; STWS; CD118; LIF-R; LIFR/CD118

Contact

 www.abclonal.com

Product Information

Source

Rabbit

Isotype

IgG

Purification

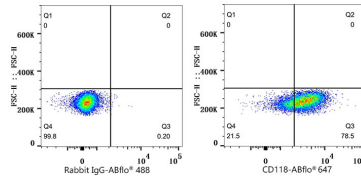
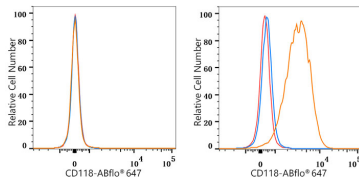
Affinity purification

Storage

Store at -20°C. Avoid freeze / thaw cycles.

Buffer: PBS with 0.05% proclin300,0.05% BSA,50% glycerol,pH7.3.

Validation Data



Flow cytometry: 1×10^6 REH cells (negative control, left) and HeLa cells (right) were surface-stained with LIFR/CD118 Rabbit mAb (A25091, 2 $\mu\text{g}/\text{mL}$, orange line) or ABflo® 647 Rabbit IgG isotype control (A22070, 5 $\mu\text{l}/\text{test}$, blue line), followed by Alexa Fluor® 647 conjugated goat anti-rabbit pAb staining. Non-fluorescently stained cells were used as blank control (red line).

Flow cytometry: 1×10^6 HeLa cells were surface-stained with ABflo® 647 Rabbit IgG isotype control (A22070, 5 $\mu\text{l}/\text{test}$, left) or LIFR/CD118 Rabbit mAb (A25091, 2 $\mu\text{g}/\text{mL}$, right).