

A25067

Leader in Biomolecular Solutions for Life Science



# ABflo® 594 Rabbit anti-Human CD327/SIGLEC6 mAb

Catalog No.: A25067

## Basic Information

### Observed MW

### Calculated MW

50kDa

### Category

SMab Recombinant Monoclonal  
Antibody

### Applications

FC

### Cross-Reactivity

Human

### CloneNo number

ARC64799-ABflo594

### Conjugate

ABflo® 594. Ex:588nm. Em:604nm.

## Recommended Dilutions

**FC** 5 µl per 10<sup>6</sup> cells in  
100 µl volume

## Contact



[www.abclonal.com](http://www.abclonal.com)

## Background

This gene encodes a member of the SIGLEC (sialic acid binding immunoglobulin-like lectin) family of proteins. The encoded transmembrane receptor binds sialyl-TN glycans and leptin. Placental expression of the encoded protein is upregulated in preeclampsia.

## Immunogen Information

### Gene ID

946

### Swiss Prot

O43699

### Immunogen

Recombinant protein (or fragment). This information is considered to be commercially sensitive.

### Synonyms

CD327; CD33L; OBBP1; CD33L1; CD33L2; CDW327

## Product Information

### Source

Rabbit

### Isotype

IgG

### Purification

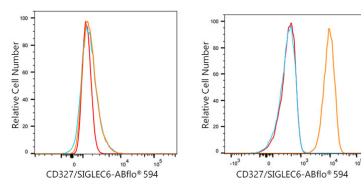
Affinity purification

### Storage

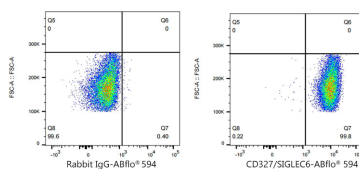
Store at 2-8°C. Avoid freeze.

Buffer: PBS containing 0.2% BSA, preserved with proclin300 or sodium azide (as specified on the Certificate of Analysis), pH 7.3.

## Validation Data



Flow cytometry:  $1 \times 10^6$  HeLa cells (negative control, left) and U-937 cells (right) were surface-stained with ABflo® 594 Rabbit anti-Human CD327/SIGLEC6 mAb (A25067, 5  $\mu$ l/Test, orange line) or ABflo® 594 Rabbit IgG isotype control (A23821, 5  $\mu$ l/Test, blue line). Non-fluorescently stained cells were used as blank control (red line).



Flow cytometry:  $1 \times 10^6$  U-937 cells were surface-stained with ABflo® 594 Rabbit IgG isotype control (A23821, 5  $\mu$ l/Test, left) or ABflo® 594 Rabbit anti-Human CD327/SIGLEC6 mAb (A25067, 5  $\mu$ l/Test, right).