

A25049

Leader in Biomolecular Solutions for Life Science



EPB41 Rabbit pAb

Catalog No.: A25049

Basic Information

Observed MW

81kDa/60-135kDa

Calculated MW

97kDa

Category

Polyclonal Antibody

Applications

WB,IP,ELISA

Cross-Reactivity

Human

Background

The protein encoded by this gene, together with spectrin and actin, constitute the red cell membrane cytoskeletal network. This complex plays a critical role in erythrocyte shape and deformability. Mutations in this gene are associated with type 1 elliptocytosis (EL1). Alternatively spliced transcript variants encoding different isoforms have been described for this gene.

Recommended Dilutions

WB 1:1000 - 1:5000

IP 0.5µg-4µg antibody for
200µg-400µg extracts
of whole cells

ELISA Recommended starting
concentration is 1
µg/mL. Please optimize
the concentration
based on your specific
assay requirements.

Immunogen Information

Gene ID

2035

Swiss Prot

P11171

Immunogen

Synthetic peptide. This information is considered to be commercially sensitive.

Synonyms

HE; EL1; 4.1R

Product Information

Source

Rabbit

Isotype

IgG

Purification

Affinity purification

Storage

Store at -20°C. Avoid freeze / thaw cycles.

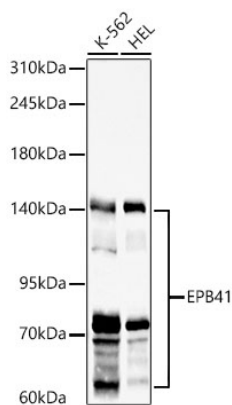
Buffer: PBS containing 50% glycerol, preserved with proclin300 or sodium azide (as specified on the Certificate of Analysis), pH 7.3.

Contact

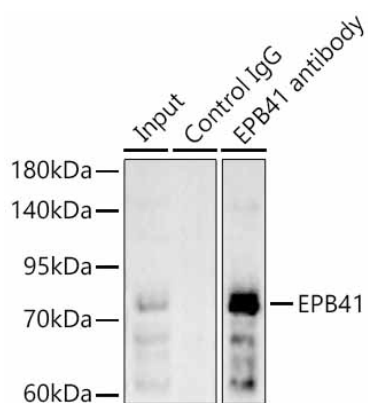


www.abclonal.com

Validation Data



Western blot analysis of various lysates using EPB41 Rabbit pAb (A25049) at 1:2000 dilution.
Secondary antibody: HRP-conjugated Goat anti-Rabbit IgG (H+L) (AS014) at 1:10000 dilution.
Lysates / proteins: 25 μ g per lane.
Blocking buffer: 3 % nonfat dry milk in TBST.
Detection: ECL Basic Kit (RM00020).
Exposure time: 90s.



Immunoprecipitation of EPB41 in 300 μ g extracts from K-562 cells using 3 μ g EPB41 Rabbit pAb (A25049). Western blot analysis was performed using EPB41 Rabbit pAb (A25049) at 1:500 dilution.