

A25048

Leader in Biomolecular Solutions for Life Science



KDM7A Rabbit pAb

Catalog No.: A25048

Basic Information

Observed MW

Refer to figures

Calculated MW

106kDa

Category

Polyclonal Antibody

Applications

IHC-P, ELISA

Cross-Reactivity

Human, Mouse, Rat

Background

Enables histone demethylase activity; methylated histone binding activity; and transition metal ion binding activity. Involved in histone lysine demethylation. Located in nucleolus and nucleoplasm. Implicated in melanoma.

Recommended Dilutions

IHC-P 1:50 - 1:200

ELISA Recommended starting concentration is 1 µg/mL. Please optimize the concentration based on your specific assay requirements.

Immunogen Information

Gene ID

80853

Swiss Prot

Q6ZMT4

Immunogen

Synthetic peptide. This information is considered to be commercially sensitive.

Synonyms

JHDM1D; KDM7A

Contact



www.abclonal.com

Product Information

Source

Rabbit

Isotype

IgG

Purification

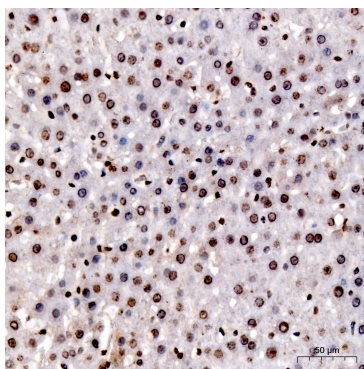
Affinity purification

Storage

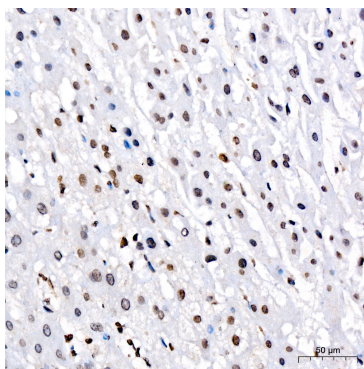
Store at -20°C. Avoid freeze / thaw cycles.

Buffer: PBS containing 50% glycerol, preserved with proclin300 or sodium azide (as specified on the Certificate of Analysis), pH 7.3.

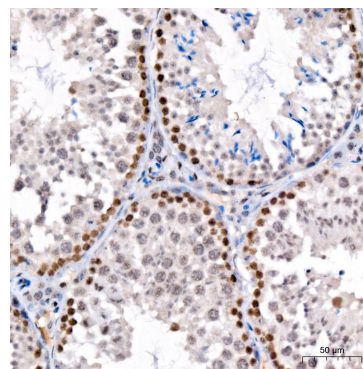
Validation Data



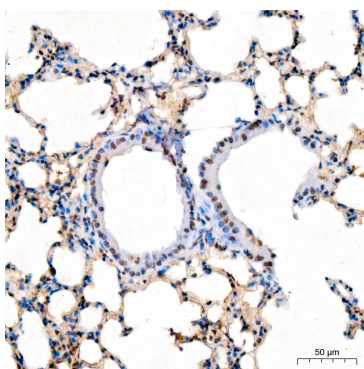
Immunohistochemistry analysis of paraffin-embedded Rat liver tissue using KDM7A Rabbit pAb (A25048) at a dilution of 1:100 (40x lens). High pressure antigen retrieval was performed with 0.01 M citrate buffer (pH 6.0) prior to IHC staining.



Immunohistochemistry analysis of paraffin-embedded Human liver cancer tissue using KDM7A Rabbit pAb (A25048) at a dilution of 1:100 (40x lens). High pressure antigen retrieval was performed with 0.01 M citrate buffer (pH 6.0) prior to IHC staining.



Immunohistochemistry analysis of paraffin-embedded Mouse testis tissue using KDM7A Rabbit pAb (A25048) at a dilution of 1:100 (40x lens). High pressure antigen retrieval was performed with 0.01 M citrate buffer (pH 6.0) prior to IHC staining.



Immunohistochemistry analysis of paraffin-embedded Mouse lung tissue using KDM7A Rabbit pAb (A25048) at a dilution of 1:100 (40x lens). High pressure antigen retrieval was performed with 0.01 M citrate buffer (pH 6.0) prior to IHC staining.