

A24994

Leader in Biomolecular Solutions for Life Science



IL-27RA/WSX-1 Rabbit mAb

Catalog No.: A24994

Recombinant

Basic Information

Observed MW

Calculated MW

69kDa

Category

SMab Recombinant Monoclonal
Antibody

Applications

FC,ELISA

Cross-Reactivity

Human,Rat

CloneNo number

ARC59510

Background

In mice, CD4+ helper T-cells differentiate into type 1 (Th1) cells, which are critical for cell-mediated immunity, predominantly under the influence of IL12. Also, IL4 influences their differentiation into type 2 (Th2) cells, which are critical for most antibody responses. Mice deficient in these cytokines, their receptors, or associated transcription factors have impaired, but are not absent of, Th1 or Th2 immune responses. This gene encodes a protein which is similar to the mouse T-cell cytokine receptor Tccr at the amino acid level, and is predicted to be a glycosylated transmembrane protein.

Recommended Dilutions

FC 1:500 - 1:1000

ELISA Recommended starting concentration is 1 µg/mL. Please optimize the concentration based on your specific assay requirements.

Immunogen Information

Gene ID

9466

Swiss Prot

Q6UWB1

Immunogen

Recombinant protein (or fragment). This information is considered to be commercially sensitive.

Synonyms

CRL1; TCCR; WSX1; IL27R; IL-27RA; zcytor1; IL-27RA/WSX-1

Contact



www.abclonal.com

Product Information

Source

Rabbit

Isotype

IgG

Purification

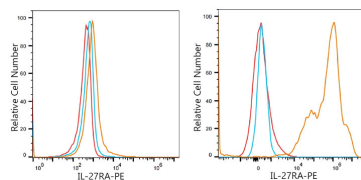
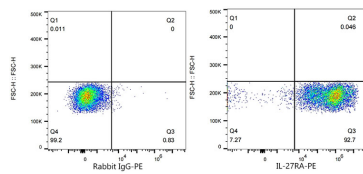
Affinity purification

Storage

Store at -20°C. Avoid freeze / thaw cycles.

Buffer: PBS containing 50% glycerol and 0.05% BSA, preserved with proclin300 or sodium azide (as specified on the Certificate of Analysis), pH 7.3.

Validation Data



Flow cytometry: 1X10⁶ 293T (Transfection) cells were surface-stained with PE Rabbit IgG isotype control (5 µl/Test,left) or IL-27RA/WSX-1 Rabbit mAb (A24994,2 µg/mL,right).

Flow cytometry: 1X10⁶ 293T cells (negative control,left) and 293T (Transfection,right) cells were surface-stained with IL-27RA/WSX-1 Rabbit mAb (A24994,2 µg/mL,orange line) or PE Rabbit IgG isotype control (5 µl/Test,blue line), followed by PE Donkey anti-rabbit Antibody staining. Non-fluorescently stained cells were used as blank control (red line).