

A2496

Leader in Biomolecular Solutions for Life Science



ILF3 Rabbit pAb

Catalog No.: A2496

3 Publications

Basic Information

Observed MW

95kDa/120 kDa

Calculated MW

95kDa

Category

Polyclonal Antibody

Applications

WB,IHC-P,IF/ICC,IP,ELISA

Cross-Reactivity

Human,Mouse,Rat

Background

This gene encodes a double-stranded RNA (dsRNA) binding protein that complexes with other proteins, dsRNAs, small noncoding RNAs, and mRNAs to regulate gene expression and stabilize mRNAs. This protein (NF90, ILF3) forms a heterodimer with a 45 kDa transcription factor (NF45, ILF2) required for T-cell expression of interleukin 2. This complex has been shown to affect the redistribution of nuclear mRNA to the cytoplasm. Knockdown of NF45 or NF90 protein retards cell growth, possibly by inhibition of mRNA stabilization. In contrast, an isoform (NF110) of this gene that is predominantly restricted to the nucleus has only minor effects on cell growth when its levels are reduced. Alternative splicing results in multiple transcript variants encoding distinct isoforms.

Recommended Dilutions

WB 1:500 - 1:2000**IHC-P** 1:50 - 1:200**IF/ICC** 1:50 - 1:200**IP** 0.5µg-4µg antibody for
200µg-400µg extracts
of whole cells**ELISA** Recommended starting
concentration is 1
µg/mL. Please optimize
the concentration
based on your specific
assay requirements.

Immunogen Information

Gene ID

3609

Swiss Prot

Q12906

Immunogen

Recombinant fusion protein containing a sequence corresponding to amino acids 1-270 of human ILF3 (NP_036350.2).

Synonyms

CBTF; DRBF; MMP4; MPP4; NF90; NFAR; NF110; NF90a; NF90b; NF90c; NFAR2; TCP80; DRBP76; NF110b; NFAR-1; NFAR-2; NFAR90; TCP110; MPP4110; NF90ctv; NFAR110; MPHOSPH4; NF-AT-90; ILF3

Product Information

Source

Rabbit

Isotype

IgG

Purification

Affinity purification

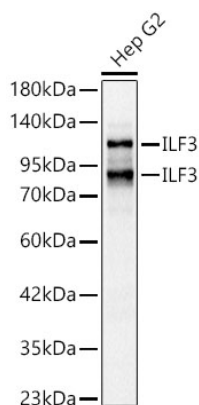
Contact

www.abclonal.com**Storage**

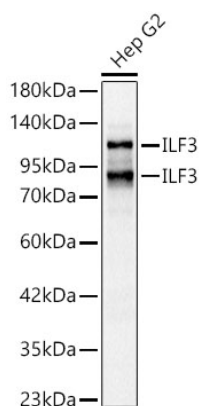
Store at -20°C. Avoid freeze / thaw cycles.

Buffer: PBS with 0.02% sodium azide, 50% glycerol, pH7.3.

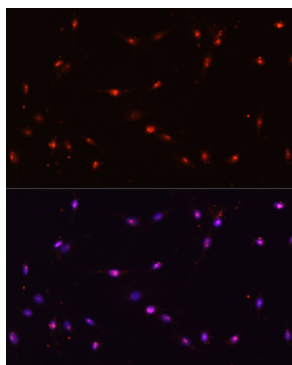
Validation Data



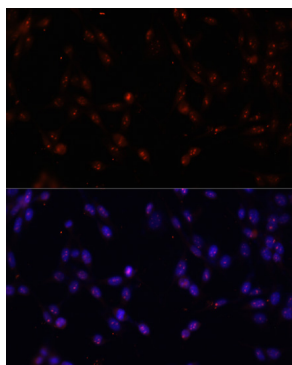
Western blot analysis of lysates from Hep G2 cells using ILF3 Rabbit pAb (A2496) at 1:1000 dilution.
 Secondary antibody: HRP-conjugated Goat anti-Rabbit IgG (H+L) (AS014) at 1:10000 dilution.
 Lysates/proteins: 25 µg per lane.
 Blocking buffer: 3% nonfat dry milk in TBST.
 Detection: ECL Basic Kit (RM00020).
 Exposure time: 0.5s.



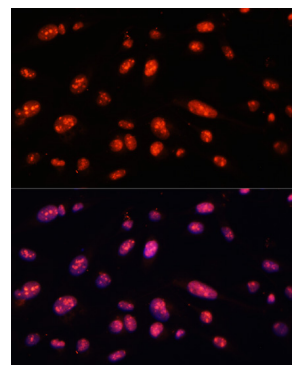
Western blot analysis of lysates from Hep G2 cells using ILF3 Rabbit pAb (A2496) at 1:1000 dilution.
 Secondary antibody: HRP-conjugated Goat anti-Rabbit IgG (H+L) (AS014) at 1:10000 dilution.
 Lysates/proteins: 25 µg per lane.
 Blocking buffer: 3% nonfat dry milk in TBST.
 Detection: ECL Basic Kit (RM00020).
 Exposure time: 0.5s.



Immunofluorescence analysis of C6 cells using ILF3 Rabbit pAb (A2496) at dilution of 1:100. Secondary antibody: Cy3-conjugated Goat anti-Rabbit IgG (H+L) (AS007) at 1:500 dilution. Blue: DAPI for nuclear staining.

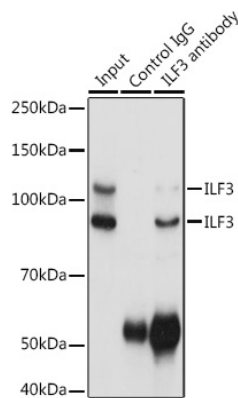


Immunofluorescence analysis of NIH-3T3 cells using ILF3 Rabbit pAb (A2496) at dilution of 1:100. Secondary antibody: Cy3-conjugated Goat anti-Rabbit IgG (H+L) (AS007) at 1:500 dilution. Blue: DAPI for nuclear staining.



Immunofluorescence analysis of U-2 OS cells using ILF3 Rabbit pAb (A2496) at dilution of 1:100. Secondary antibody: Cy3-conjugated Goat anti-Rabbit IgG (H+L) (AS007) at 1:500 dilution. Blue: DAPI for nuclear staining.

Validation Data



Immunoprecipitation analysis of 300 µg extracts of HeLa cells using 3 µg ILF3 antibody (A2496). Western blot was performed from the immunoprecipitate using ILF3 antibody (A2496) at a dilution of 1:1000.