

A24829

Leader in Biomolecular Solutions for Life Science



# Aldehyde dehydrogenase 5-A1/SSADH/ALDH5A1 Rabbit mAb

Catalog No.: A24829 **Recombinant**

## Basic Information

### Observed MW

54kDa

### Calculated MW

57kDa

### Category

SMab Recombinant Monoclonal Antibody

### Applications

WB,IHC-P,IF/ICC,ELISA

### Cross-Reactivity

Human,Mouse,Rat

### CloneNo number

ARC64127

## Background

This protein belongs to the aldehyde dehydrogenase family of proteins. This gene encodes a mitochondrial NAD(+)-dependent succinic semialdehyde dehydrogenase. A deficiency of this enzyme, known as 4-hydroxybutyricaciduria, is a rare inborn error in the metabolism of the neurotransmitter 4-aminobutyric acid (GABA). In response to the defect, physiologic fluids from patients accumulate GHB, a compound with numerous neuromodulatory properties. Two transcript variants encoding distinct isoforms have been identified for this gene.

## Recommended Dilutions

**WB** 1:2000 - 1:8000

**IHC-P** 1:200 - 1:2000

**IF/ICC** 1:200 - 1:2000

**ELISA** Recommended starting concentration is 1 µg/mL. Please optimize the concentration based on your specific assay requirements.

## Immunogen Information

### Gene ID

7915

### Swiss Prot

P51649

### Immunogen

Recombinant protein (or fragment). This information is considered to be commercially sensitive.

### Synonyms

SSDH; SSADH; Aldehyde dehydrogenase 5-A1/SSADH/ALDH5A1?

## Product Information

### Source

Rabbit

### Isotype

IgG

### Purification

Affinity purification

### Storage

Store at -20°C. Avoid freeze / thaw cycles.

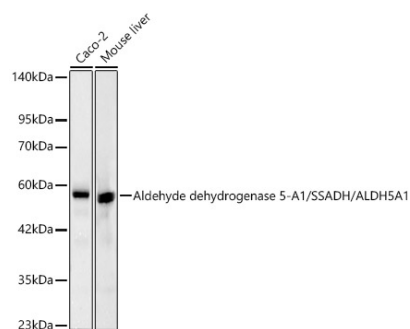
Buffer: PBS containing 50% glycerol and 0.05% BSA, preserved with proclin300 or sodium azide (as specified on the Certificate of Analysis), pH 7.3.

## Contact

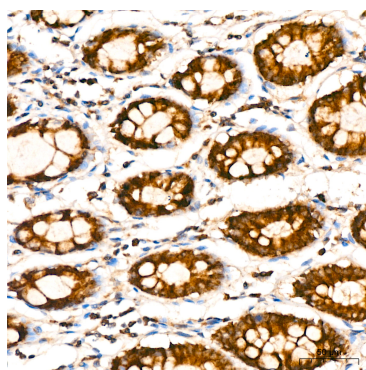


[www.abclonal.com](http://www.abclonal.com)

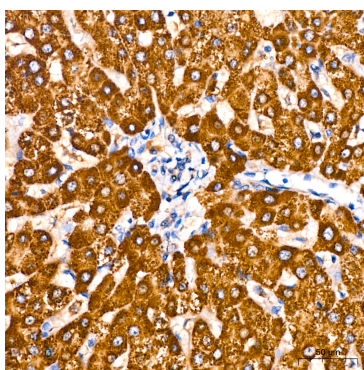
## Validation Data



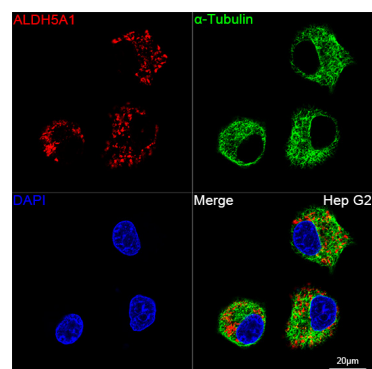
Western blot analysis of various lysates, using Aldehyde dehydrogenase 5-A1/SSADH/ALDH5A1 Rabbit mAb (A24829) at 1:2000 dilution.  
Secondary antibody: HRP-conjugated Goat anti-Rabbit IgG (H+L) (AS014) at 1:10000 dilution.  
Lysates/proteins: 25µg per lane.  
Blocking buffer: 3% nonfat dry milk in TBST.  
Detection: ECL Basic Kit (RM00020).  
Exposure time: 20s.



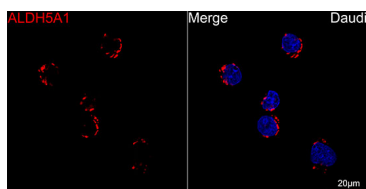
Immunohistochemistry analysis of paraffin-embedded Human colon tissue using Aldehyde dehydrogenase 5-A1/SSADH/ALDH5A1 Rabbit mAb (A24829) at a dilution of 1:200 (40x lens). High pressure antigen retrieval performed with 0.01M Citrate buffer (pH 6.0) prior to IHC staining.



Immunohistochemistry analysis of paraffin-embedded Human liver tissue using Aldehyde dehydrogenase 5-A1/SSADH/ALDH5A1 Rabbit mAb (A24829) at a dilution of 1:200 (40x lens). High pressure antigen retrieval performed with 0.01M Citrate buffer (pH 6.0) prior to IHC staining.



Confocal imaging of Hep G2 cells using Aldehyde dehydrogenase 5-A1/SSADH/ALDH5A1 Rabbit mAb (A24829, dilution 1:200) followed by a further incubation with Cy3 Goat Anti-Rabbit IgG (H+L) (AS007, dilution 1:500) (Red). The cells were counterstained with α-Tubulin Mouse mAb (AC012, dilution 1:400) followed by incubation with ABflo® 488-conjugated Goat Anti-Mouse IgG (H+L) Ab (AS076, dilution 1:500) (Green). DAPI was used for nuclear staining (blue). Objective: 100x.



Confocal imaging of Daudi cells using Aldehyde dehydrogenase 5-A1/SSADH/ALDH5A1 Rabbit mAb (A24829, dilution 1:200) followed by a further incubation with Cy3 Goat Anti-Rabbit IgG (H+L) (AS007, dilution 1:500) (Red). DAPI was used for nuclear staining (blue). Objective: 100x.

**Antibody | Protein | ELISA Kits | Enzyme | NGS | Service**

## Validation Data

---

for nuclear staining (blue). Objective:  
100x.