

A24754

Leader in Biomolecular Solutions for Life Science



# SLC25A1 Rabbit pAb

Catalog No.: A24754

## Basic Information

---

### Observed MW

34kDa

### Calculated MW

34kDa

### Category

Polyclonal Antibody

### Applications

WB,ELISA

### Cross-Reactivity

Human,Mouse,Rat

## Background

---

This gene encodes a member of the mitochondrial carrier subfamily of solute carrier proteins. Members of this family include nuclear-encoded transporters that translocate small metabolites across the mitochondrial membrane. This protein regulates the movement of citrate across the inner membranes of the mitochondria. Mutations in this gene have been associated with combined D-2- and L-2-hydroxyglutaric aciduria. Pseudogenes of this gene have been identified on chromosomes 7, 11, 16, and 19. Alternative splicing results in multiple transcript variants.

## Recommended Dilutions

---

WB 1:1000 - 1:5000

## Immunogen Information

---

### Gene ID

6576

### Swiss Prot

P53007

### Immunogen

A synthetic peptide corresponding to a sequence within amino acids 14-124 of human SLC25A1 (NP\_005975.1).

### Synonyms

SLC25A1; CTP; D2L2AD; SEA; SLC20A3; solute carrier family 25 member 1

## Contact

---

 [www.abclonal.com](http://www.abclonal.com)

## Product Information

---

### Source

Rabbit

### Isotype

IgG

### Purification

Affinity purification

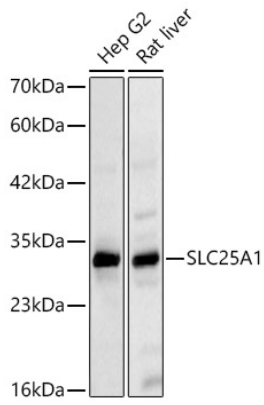
### Storage

Store at -20°C. Avoid freeze / thaw cycles.

Buffer: PBS with 0.05% proclin300,50% glycerol,pH7.3.

## Validation Data

---



Western blot analysis of various lysates using SLC25A1 Rabbit pAb (A24754) at 1:1000 dilution.

Secondary antibody: HRP-conjugated Goat anti-Rabbit IgG (H+L) (AS014) at 1:10000 dilution.

Lysates / proteins: 25 µg per lane.

Blocking buffer: 3 % nonfat dry milk in TBST.

Detection: ECL Basic Kit (RM00020).

Exposure time: 10s.