

A24742

Leader in Biomolecular Solutions for Life Science



## IKB- $\alpha$ Rabbit pAb

Catalog No.: A24742

### Basic Information

**Observed MW**

39kDa

**Calculated MW**

36kDa

**Category**

Polyclonal Antibody

**Applications**

WB

**Cross-Reactivity**

Human,Mouse,Rat

### Background

This gene encodes a member of the NF-kappa-B inhibitor family, which contain multiple ankrin repeat domains. The encoded protein interacts with REL dimers to inhibit NF-kappa-B/REL complexes which are involved in inflammatory responses. The encoded protein moves between the cytoplasm and the nucleus via a nuclear localization signal and CRM1-mediated nuclear export. Mutations in this gene have been found in ectodermal dysplasia anhidrotic with T-cell immunodeficiency autosomal dominant disease.

### Recommended Dilutions

WB 1:500 - 1:1000

### Immunogen Information

**Gene ID**

4792

**Swiss Prot**

P25963

**Immunogen**

Synthetic peptide. This information is considered to be commercially sensitive.

**Synonyms**

IKBA; MAD-3; NFKBI; EDAID2; IKB- $\alpha$

### Contact



[www.abclonal.com](http://www.abclonal.com)

### Product Information

**Source**

Rabbit

**Isotype**

IgG

**Purification**

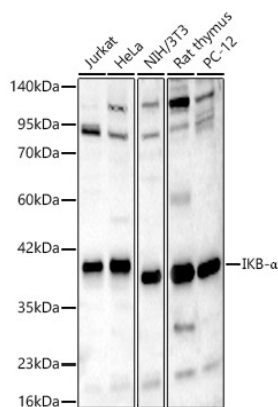
Affinity purification

**Storage**

Store at -20°C. Avoid freeze / thaw cycles.

Buffer: PBS with 0.05% proclin300,50% glycerol,pH7.3.

# Validation Data



Western blot analysis of various lysates using IKB-α Rabbit pAb (A24742) at 1:1000 dilution.  
Secondary antibody: HRP-conjugated Goat anti-Rabbit IgG (H+L) (AS014) at 1:10000 dilution.  
Lysates / proteins: 25 µg per lane.  
Blocking buffer: 3 % nonfat dry milk in TBST.  
Detection: ECL Basic Kit (RM00020).  
Exposure time: 60s.