

A24671

Leader in Biomolecular Solutions for Life Science



www.abclonal.com

VEGFR2/KDR/Flk-1/CD309 Rabbit pAb

Catalog No.: A24671

1 Publications

Basic Information

Observed MW

230kDa

Calculated MW

150kDa

Category

Polyclonal Antibody

Applications

WB,ELISA

Cross-Reactivity

Mouse

Background

Enables growth factor binding activity and vascular endothelial growth factor-activated receptor activity. Involved in several processes, including circulatory system development; peptidyl-tyrosine autophosphorylation; and positive regulation of vasculogenesis. Acts upstream of or within several processes, including animal organ development; positive regulation of cell population proliferation; and vasculature development. Located in several cellular components, including cell junction; endosome; and external side of plasma membrane. Is expressed in several structures, including alimentary system; cardiovascular system; central nervous system; extraembryonic component; and genitourinary system. Human ortholog(s) of this gene implicated in several diseases, including adhesions of uterus; artery disease (multiple); gastrointestinal system cancer (multiple); macular degeneration (multiple); and pancreatic cancer (multiple). Orthologous to human KDR (kinase insert domain receptor).

Recommended Dilutions

WB 1:500 - 1:5000

ELISA Recommended starting concentration is 1 µg/mL. Please optimize the concentration based on your specific assay requirements.

Immunogen Information

Gene ID

16542

Swiss Prot

P35918

Immunogen

Recombinant protein (or fragment). This information is considered to be commercially sensitive.

Synonyms

orv; Flk1; Ly73; Flk-1; Krd-1; VEGFR2; VEGFR-2; sVEGFR-2; 6130401C07; VEGFR2/KDR/Flk-1/CD309

Contact



www.abclonal.com

Product Information

Source

Rabbit

Isotype

IgG

Purification

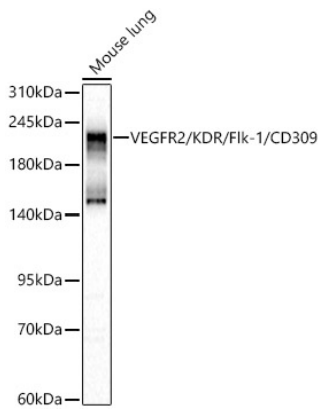
Affinity purification

Storage

Store at -20°C. Avoid freeze / thaw cycles.

Buffer: PBS containing 50% glycerol, preserved with proclin300 or sodium azide (as specified on the Certificate of Analysis), pH 7.3.

Validation Data



Western blot analysis of lysates from Mouse lung, using VEGFR2/KDR/Fik-1/CD309 Rabbit pAb (A24671) at 1:1000 dilution.
Secondary antibody: HRP-conjugated Goat anti-Rabbit IgG (H+L) (AS014) at 1:10000 dilution.
Lysates/proteins: 25µg per lane.
Blocking buffer: 3% nonfat dry milk in TBST.
Detection: ECL Basic Kit (RM00020).
Exposure time: 60s.