

A24565

Leader in Biomolecular Solutions for Life Science



PGS1 Rabbit pAb

Catalog No.: A24565

Basic Information

Observed MW

62kDa

Calculated MW

5kDa/37kDa/51kDa/62kDa

Category

Polyclonal Antibody

Applications

WB,ELISA

Cross-Reactivity

Human,Mouse,Rat

Background

Predicted to enable CDP-diacylglycerol-glycerol-3-phosphate 3-phosphatidyltransferase activity and calcium ion binding activity. Predicted to be involved in cardiolipin biosynthetic process and diacylglycerol metabolic process. Located in endoplasmic reticulum.

Recommended Dilutions

WB 1:500 - 1:1000

Immunogen Information

Gene ID

9489

Swiss Prot

Q32NB8

Immunogen

A synthesized peptide derived from human PGS1.

Synonyms

PGS1; phosphatidylglycerophosphate synthase 1

Contact

 www.abclonal.com

Product Information

Source

Rabbit

Isotype

IgG

Purification

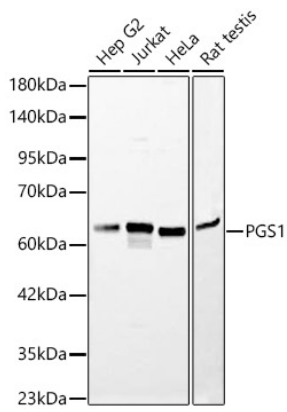
Affinity purification

Storage

Store at -20°C. Avoid freeze / thaw cycles.

Buffer: PBS with 0.05% proclin300,50% glycerol,pH7.3.

Validation Data



Western blot analysis of various lysates, using PGS1 Rabbit pAb (A24565) at 1:1000 dilution.

Secondary antibody: HRP Goat Anti-Rabbit IgG (H+L) (AS014) at 1:10000 dilution.

Lysates/proteins: 25ug per lane.

Blocking buffer: 3% nonfat dry milk in TBST.

Detection: ECL Basic Kit (RM00020).

Exposure time: 45s.