

A24505

Leader in Biomolecular Solutions for Life Science



SETD1B Rabbit pAb

Catalog No.: A24505

Basic Information

Observed MW

Refer to figures

Calculated MW

208kDa/212kDa

Category

Polyclonal Antibody

Applications

IHC-P, ELISA

Cross-Reactivity

Mouse

Background

SET1B is a component of a histone methyltransferase complex that produces trimethylated histone H3 at Lys4 (Lee et al., 2007 [PubMed 17355966]).[supplied by OMIM, Mar 2008]

Recommended Dilutions

IHC-P 1:50 - 1:200

ELISA Recommended starting concentration is 1 µg/mL. Please optimize the concentration based on your specific assay requirements.

Immunogen Information

Gene ID
23067

Swiss Prot
Q9UPS6

Immunogen

Synthetic peptide. This information is considered to be commercially sensitive.

Synonyms

SETD1B; KMT2G; Set1B; SET domain containing 1B

Contact

 www.abclonal.com

Product Information

Source
Rabbit

Isotype
IgG

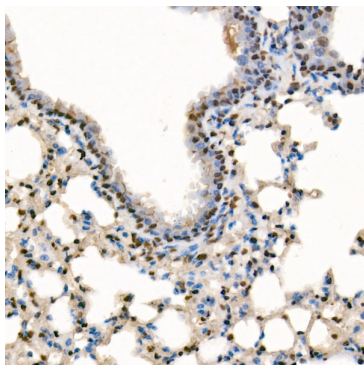
Purification
Affinity purification

Storage

Store at -20°C. Avoid freeze / thaw cycles.

Buffer: PBS with 0.05% proclin300, 50% glycerol, pH7.3.

Validation Data



Immunohistochemistry analysis of paraffin-embedded Mouse lung using SETD1B Rabbit pAb (A24505) at dilution of 1:100 (40x lens). High pressure antigen retrieval performed with 0.01M Citrate buffer (pH 6.0) prior to IHC staining.