

A24493

Leader in Biomolecular Solutions for Life Science



TIM-1/KIM-1/HAVCR Rabbit pAb

Catalog No.: A24493

Basic Information

Observed MW

50kDa

Calculated MW

33kDa

Category

Polyclonal Antibody

Applications

WB, ELISA

Cross-Reactivity

Human

Background

Enables phosphatidylserine binding activity. Acts upstream of or within positive regulation of mast cell activation; response to lipopolysaccharide; and response to wounding. Located in brush border and cell surface. Is expressed in brain; dorsal aorta; liver; lung; and reproductive system. Human ortholog(s) of this gene implicated in atopic dermatitis. Orthologous to human HAVCR1 (hepatitis A virus cellular receptor 1).

Recommended Dilutions

WB 1:2000 - 1:8000

Immunogen Information

Gene ID

171283

Swiss Prot

Q5QNS5

Immunogen

Recombinant fusion protein containing a sequence corresponding to amino acids 22-237 of mouse TIM-1/KIM-1/HAVCR (NP_599009.2).

Synonyms

Tim1; KIM-1; TIM-1; Timd1; TIM-1/KIM-1/HAVCR

Contact



www.abclonal.com

Product Information

Source

Rabbit

Isotype

IgG

Purification

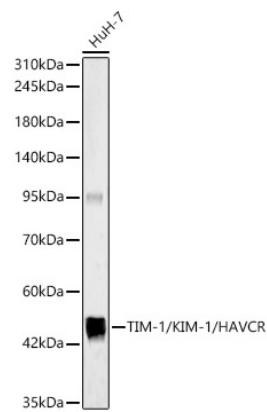
Affinity purification

Storage

Store at -20°C. Avoid freeze / thaw cycles.

Buffer: PBS with 0.05% proclin300, 50% glycerol, pH7.3.

Validation Data



Western blot analysis of HuH-7, using TIM-1/KIM-1/HAVCR Rabbit pAb (A24493) at 1:7000 dilution.
Secondary antibody: HRP Goat Anti-Rabbit IgG (H+L) (AS014) at 1:10000 dilution.
Lysates/proteins: 25ug per lane.
Blocking buffer: 3% nonfat dry milk in TBST.
Detection: ECL Basic Kit (RM00020).
Exposure time: 180s.