

A24391

Leader in Biomolecular Solutions for Life Science



# GIRK2(KCNJ6) Rabbit mAb

Catalog No.: A24391 **Recombinant**

## Basic Information

### Observed MW

48kDa

### Calculated MW

48kDa

### Category

SMab Recombinant Monoclonal Antibody

### Applications

WB,IF/ICC,ELISA

### Cross-Reactivity

Human,Rat

### CloneNo number

ARC63224

## Recommended Dilutions

**WB** 1:1000 - 1:4000

**IF/ICC** 1:200 - 1:800

**ELISA** Recommended starting concentration is 1 µg/mL. Please optimize the concentration based on your specific assay requirements.

## Contact

 [www.abclonal.com](http://www.abclonal.com)

## Background

This gene encodes a member of the G protein-coupled inwardly-rectifying potassium channel family of inward rectifier potassium channels. This type of potassium channel allows a greater flow of potassium into the cell than out of it. These proteins modulate many physiological processes, including heart rate in cardiac cells and circuit activity in neuronal cells, through G-protein coupled receptor stimulation. Mutations in this gene are associated with Keppen-Lubinsky Syndrome, a rare condition characterized by severe developmental delay, facial dysmorphism, and intellectual disability.

## Immunogen Information

### Gene ID

3763

### Swiss Prot

P48051

### Immunogen

A synthetic peptide corresponding to a sequence within amino acids 1-100 of human GIRK2(NP\_002231.1).

### Synonyms

BIR1; GIRK2; KATP2; KCNJ7; KPLBS; GIRK-2; KATP-2; KIR3.2; hiGIRK2; GIRK2(KCNJ6)

## Product Information

### Source

Rabbit

### Isotype

IgG

### Purification

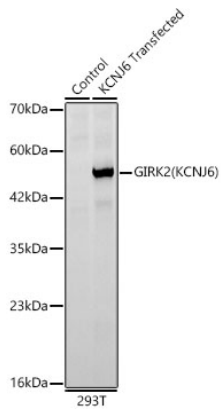
Affinity purification

### Storage

Store at -20°C. Avoid freeze / thaw cycles.

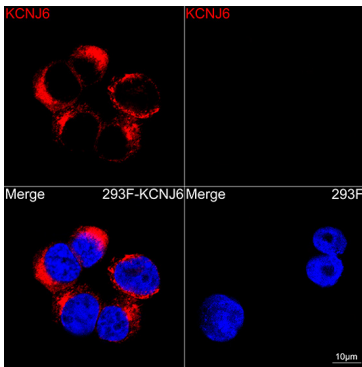
Buffer: PBS with 0.05% proclin300,0.05% BSA,50% glycerol,pH7.3.

## Validation Data

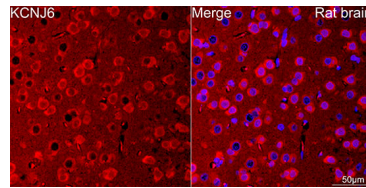


Western blot analysis of lysates from wild type (WT) and 293T cells transfected with KCNJ6 using GIRK2(KCNJ6) Rabbit mAb (A24391) at 1:1000 dilution.  
Secondary antibody: HRP-conjugated Goat anti-Rabbit IgG (H+L) (AS014) at 1:10000 dilution.

Lysates/proteins: 25µg per lane.  
Blocking buffer: 3% nonfat dry milk in TBST.  
Detection: ECL Basic Kit (RM00020).  
Exposure time: 30s.



Confocal imaging of 293F-KCNJ6 and 293F cells using GIRK2(KCNJ6) Rabbit mAb (A24391, dilution 1:200) (Red). DAPI was used for nuclear staining (blue). Objective: 100x.



Confocal imaging of paraffin-embedded Rat brain tissue using GIRK2(KCNJ6) Rabbit mAb (A24391, dilution 1:200) followed by a further incubation with Cy3 Goat Anti-Rabbit IgG (H+L) (AS007, dilution 1:500) (Red). DAPI was used for nuclear staining (Blue). Microwave antigen retrieval performed with 0.01M Citrate Buffer (pH 6.0) prior to IF staining. Objective: 40x.