

A24313

Leader in Biomolecular Solutions for Life Science



# ABflo® 594 Rabbit anti-Human CD303/BDCA-2 mAb

Catalog No.: A24313

## Basic Information

---

### Observed MW

Refer to figures

### Calculated MW

21kDa/25kDa

### Category

SMab Recombinant Monoclonal  
Antibody

### Applications

FC

### Cross-Reactivity

Human

### CloneNo number

ARC61690-ABflo594

### Conjugate

ABflo® 594. Ex:588nm. Em:604nm.

## Recommended Dilutions

---

FC 5 µl per 10<sup>6</sup> cells in  
100 µl volume

## Contact

---

 [www.abclonal.com](http://www.abclonal.com)

## Background

---

This gene encodes a member of the C-type lectin/C-type lectin-like domain (CTL/CTLD) superfamily. Members of this family share a common protein fold and have diverse functions, such as cell adhesion, cell-cell signalling, glycoprotein turnover, and roles in inflammation and immune response. The encoded type 2 transmembrane protein may play a role in dendritic cell function. Two transcript variants encoding distinct isoforms have been identified for this gene.

## Immunogen Information

---

### Gene ID

170482

### Swiss Prot

Q8WTT0

### Immunogen

Recombinant protein (or fragment). This information is considered to be commercially sensitive.

### Synonyms

CLEC4C; BDCA2; CD303; CLECSF11; CLECSF7; DLEC; HECL; PRO34150; C-type lectin domain family 4 member C

## Product Information

---

### Source

Rabbit

### Isotype

IgG

### Purification

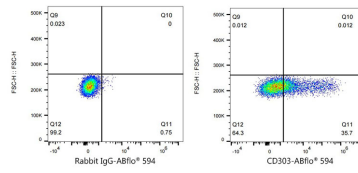
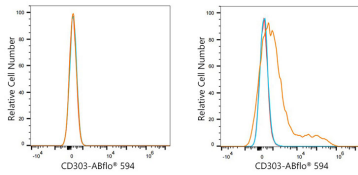
Affinity purification

### Storage

Store at 2-8°C. Avoid freeze.

Buffer: PBS containing 0.2% BSA, preserved with proclin300 or sodium azide (as specified on the Certificate of Analysis), pH 7.3.

## Validation Data



Flow cytometry:  $1 \times 10^6$  293T cells (negative control, Left) and 293T(Transfection) cells (Right) were surface-stained with ABflo® 594 Rabbit anti-Human CD303/BDCA-2 mAb (A24313, 5  $\mu$ l/Test, orange line) or ABflo® 594 Rabbit IgG isotype control (A23821, 5  $\mu$ l/Test, blue line). Non-fluorescently stained cells were used as blank control (red line).

Flow cytometry:  $1 \times 10^6$  293T(Transfection) cells were surface-stained with ABflo® 594 Rabbit IgG isotype control (A23821, 5  $\mu$ l/Test, left) or ABflo® 594 Rabbit anti-Human CD303/BDCA-2 mAb (A24313, 5  $\mu$ l/Test, right).