

A24264

Leader in Biomolecular Solutions for Life Science



CD25 Rabbit mAb

Catalog No.: A24264 **Recombinant**

Basic Information

Observed MW

55kDa

Calculated MW

31kDa

Category

Monoclonal Antibody

Applications

WB,FC,ELISA

Cross-Reactivity

Mouse

CloneNo number

ARC54526

Recommended Dilutions

WB 1:500 - 1:1000

FC 1:200 - 1:500

ELISA Recommended starting concentration is 1 µg/mL. Please optimize the concentration based on your specific assay requirements.

Contact

 www.abclonal.com

Background

Enables interleukin-2 binding activity and interleukin-2 receptor activity. Acts upstream of or within several processes, including Notch signaling pathway; activation-induced cell death of T cells; and regulation of T cell proliferation. Located in external side of plasma membrane. Is expressed in bone marrow. Used to study Sjogren's syndrome and inflammatory bowel disease. Human ortholog(s) of this gene implicated in immunodeficiency 41; lymphopenia; multiple sclerosis; type 1 diabetes mellitus; and type 1 diabetes mellitus 10. Orthologous to human IL2RA (interleukin 2 receptor subunit alpha).

Immunogen Information

Gene ID

16184

Swiss Prot

P01590

Immunogen

Recombinant protein (or fragment). This information is considered to be commercially sensitive.

Synonyms

CD25; IL2r; Ly-43

Product Information

Source

Rabbit

Isotype

IgG

Purification

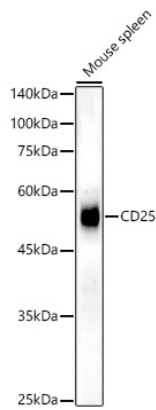
Affinity purification

Storage

Store at -20°C. Avoid freeze / thaw cycles.

Buffer: PBS containing 50% glycerol and 0.05% BSA, preserved with proclin300 or sodium azide (as specified on the Certificate of Analysis), pH 7.3.

Validation Data



Western blot analysis of lysates from Mouse spleen, using CD25 Rabbit mAb (A24264) at 1:1000 dilution.

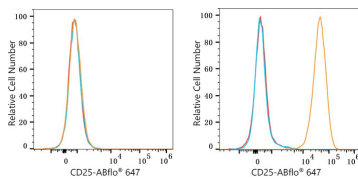
Secondary antibody: HRP-conjugated Goat anti-Rabbit IgG (H+L) (AS014) at 1:10000 dilution.

Lysates/proteins: 25µg per lane.

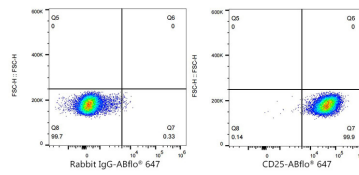
Blocking buffer: 3% nonfat dry milk in TBST.

Detection: ECL Basic Kit (RM00020).

Exposure time: 180s.



Flow cytometry: 1×10^6 C2C12 cells (negative control, left) and CTLL-2 cells (right) were surface-stained with CD25 Rabbit mAb (A24264, 2 µg/mL, orange line) or ABflo® 647 Rabbit IgG isotype control (A22070, 2 µg/mL, blue line), followed by Alexa Fluor® 647 conjugated goat anti-rabbit pAb staining. Non-fluorescently stained cells were used as blank control (red line).



Flow cytometry: 1×10^6 CTLL-2 cells were surface-stained with ABflo® 647 Rabbit IgG isotype control (A22070, 2 µg/mL, left) or CD25 Rabbit mAb (A24264, 2 µg/mL, right).