

A24253

Leader in Biomolecular Solutions for Life Science



## CD62L/L-Selectin Rabbit mAb

Catalog No.: A24253

Recombinant

### Basic Information

#### Observed MW

Refer to figures

#### Calculated MW

42kDa/43kDa

#### Category

SMab Recombinant Monoclonal  
Antibody

#### Applications

FC,ELISA

#### Cross-Reactivity

Human

#### CloneNo number

ARC60035

### Background

This gene encodes a cell surface adhesion molecule that belongs to a family of adhesion/homing receptors. The encoded protein contains a C-type lectin-like domain, a calcium-binding epidermal growth factor-like domain, and two short complement-like repeats. The gene product is required for binding and subsequent rolling of leucocytes on endothelial cells, facilitating their migration into secondary lymphoid organs and inflammation sites. Single-nucleotide polymorphisms in this gene have been associated with various diseases including immunoglobulin A nephropathy. Alternatively spliced transcript variants have been found for this gene.

### Recommended Dilutions

FC 1:500 - 1:000

ELISA Recommended starting concentration is 1 µg/mL. Please optimize the concentration based on your specific assay requirements.

### Immunogen Information

#### Gene ID

6402

#### Swiss Prot

P14151

#### Immunogen

Recombinant fusion protein containing a sequence corresponding to amino acids 39-332 of human CD62L (NP\_000646.3).

#### Synonyms

SELL; CD62L; LAM1; LECAM1; LEU8; LNHR; LSEL; LYAM1; PLNHR; TQ1; L-selectin; CD62L/L-Selectin

### Contact

 [www.abclonal.com](http://www.abclonal.com)

### Product Information

#### Source

Rabbit

#### Isotype

IgG

#### Purification

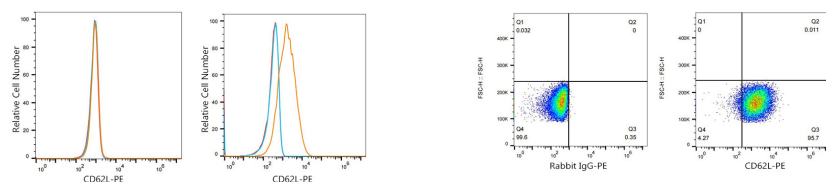
Affinity purification

#### Storage

Store at -20°C. Avoid freeze / thaw cycles.

Buffer: PBS with 0.05% proclin300,0.05% BSA,50% glycerol,pH7.3

## Validation Data



Flow cytometry:  $1 \times 10^6$  T-47D cells (negative control, left) and MOLT-4 cells (right) were surface-stained with CD62L Rabbit mAb(A24253, 2  $\mu\text{g/mL}$ , orange line) or PE Rabbit IgG isotype control (2  $\mu\text{g/mL}$ , blue line), followed by PE Donkey anti-rabbit Antibody (1:200 dilution) staining. Non-fluorescently stained cells were used as blank control (red line).

Flow cytometry:  $1 \times 10^6$  MOLT-4 cells were surface-stained with PE Rabbit IgG isotype control (2  $\mu\text{g/mL}$ , left) or CD62L Rabbit mAb(A24253, 2  $\mu\text{g/mL}$ , right).