

A24219

Leader in Biomolecular Solutions for Life Science



## [KD Validated] YTHDC2 Rabbit pAb

Catalog No.: A24219

### Basic Information

#### Observed MW

170kDa

#### Calculated MW

160kDa

#### Category

Polyclonal Antibody

#### Applications

WB,IP,ELISA,IF-P

#### Cross-Reactivity

Human,Mouse,Rat

### Background

This gene encodes a member of the DEAH (Asp-Glu-Ala-His) subfamily of proteins, part of the DEAD (Asp-Glu-Ala-Asp) box family of RNA helicases. The encoded protein binds to N6-methyladenosine, a common modified RNA nucleotide that is enriched in the stop codons and 3' UTRs of eukaryotic messenger RNAs. Binding of proteins to this modified nucleotide may regulate mRNA translation and stability. This gene may be associated with susceptibility to pancreatic cancer in human patients, and knockdown of this gene resulted in reduced proliferation in a human liver cancer cell line.

### Recommended Dilutions

**WB** 1:500 - 1:1000

**IP** 0.5µg-4µg antibody for  
200µg-400µg extracts  
of whole cells

**IF-P** 1:50 - 1:200

**ELISA** Recommended starting  
concentration is 1  
µg/mL. Please optimize  
the concentration  
based on your specific  
assay requirements.

### Contact

 [www.abclonal.com](http://www.abclonal.com)

### Immunogen Information

#### Gene ID

64848

#### Swiss Prot

Q9H6S0

#### Immunogen

Recombinant protein (or fragment). This information is considered to be commercially sensitive.

#### Synonyms

CAHL; hYTHDC2; YTHDC2

### Product Information

#### Source

Rabbit

#### Isotype

IgG

#### Purification

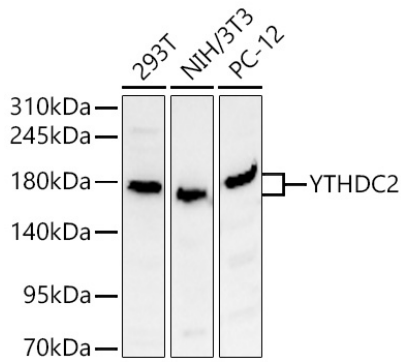
Affinity purification

#### Storage

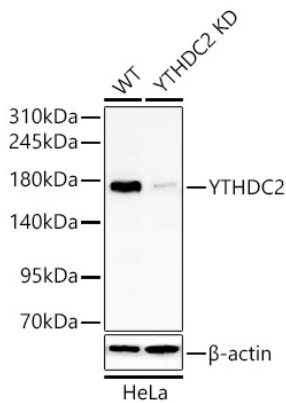
Store at -20°C. Avoid freeze / thaw cycles.

Buffer: PBS containing 50% glycerol, preserved with proclin300 or sodium azide (as specified on the Certificate of Analysis), pH 7.3.

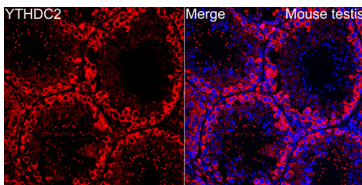
## Validation Data



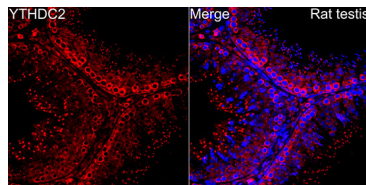
Western blot analysis of various lysates using [KD Validated] YTHDC2 Rabbit pAb (A24219) at 1:1000 dilution.  
Secondary antibody: HRP-conjugated Goat anti-Rabbit IgG (H+L) (AS014) at 1:10000 dilution.  
Lysates / proteins: 25 µg per lane.  
Blocking buffer: 3 % nonfat dry milk in TBST.  
Detection: ECL Basic Kit (RM00020).  
Exposure time: 30s.



Western blot analysis of lysates from wild type (WT) and YTHDC2 knockdown (KD) HeLa cells using [KD Validated] YTHDC2 Rabbit pAb (A24219) at 1:1000 dilution.  
Secondary antibody: HRP-conjugated Goat anti-Rabbit IgG (H+L) (AS014) at 1:10000 dilution. Lysates/proteins: 25 µg per lane.  
Blocking buffer: 3% nonfat dry milk in TBST.  
Detection: ECL Basic Kit (RM00020).  
Exposure time: 30s.



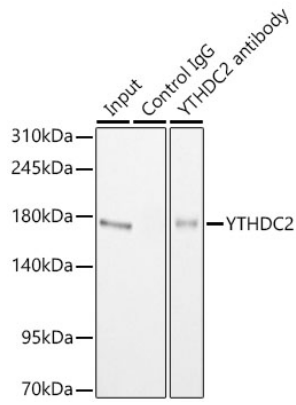
Immunofluorescence analysis of paraffin-embedded Mouse testis using [KD Validated] YTHDC2 Rabbit pAb (A24219) at a dilution of 1:150 (40x lens). Secondary antibody: Cy3 Goat Anti-Rabbit IgG (H+L) (AS007) at 1:500 dilution. Blue: DAPI for nuclear staining.



Immunofluorescence analysis of paraffin-embedded Rat testis using [KD Validated] YTHDC2 Rabbit pAb (A24219) at a dilution of 1:150 (40x lens). Secondary antibody: Cy3 Goat Anti-Rabbit IgG (H+L) (AS007) at 1:500 dilution. Blue: DAPI for nuclear staining.

## Validation Data

---



Immunoprecipitation of YTHDC2 in 200  $\mu$ g extracts from 293T cells using 0.5  $\mu$ g [KD Validated] YTHDC2 Rabbit pAb (A24219). Western blot analysis was performed using [KD Validated] YTHDC2 Rabbit pAb (A24219) at 1:1000 dilution.