

A24115

Leader in Biomolecular Solutions for Life Science



# CFAP20/GTL3 Rabbit mAb

Catalog No.: A24115 **Recombinant**

## Basic Information

### Observed MW

23kDa

### Calculated MW

23kDa

### Category

SMab Recombinant Monoclonal Antibody

### Applications

WB,IHC-P,ELISA

### Cross-Reactivity

Human,Mouse,Rat

### CloneNo number

ARC58773

## Recommended Dilutions

**WB** 1:2000 - 1:7000

**IHC-P** 1:200 - 1:800

**ELISA** Recommended starting concentration is 1 µg/mL. Please optimize the concentration based on your specific assay requirements.

## Contact

 [www.abclonal.com](http://www.abclonal.com)

## Background

Enables RNA binding activity. Involved in several processes, including positive regulation of feeding behavior; protein polyglutamylation; and regulation of cell motility. Located in centriole; ciliary basal body; and nucleoplasm.

## Immunogen Information

### Gene ID

29105

### Swiss Prot

Q9Y6A4

### Immunogen

Synthetic peptide. This information is considered to be commercially sensitive.

### Synonyms

GTL3; BUG22; EVORF; fSAP23; C16orf80; CFAP20/GTL3

## Product Information

### Source

Rabbit

### Isotype

IgG

### Purification

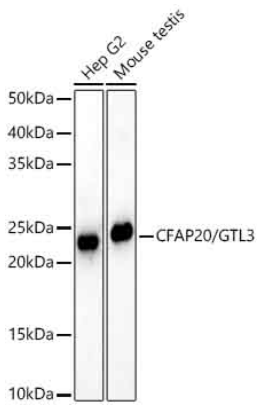
Affinity purification

### Storage

Store at -20°C. Avoid freeze / thaw cycles.

Buffer: PBS containing 50% glycerol and 0.05% BSA, preserved with proclin300 or sodium azide (as specified on the Certificate of Analysis), pH 7.3.

## Validation Data



Western blot analysis of various lysates using CFAP20/GTL3 Rabbit mAb (A24115) at 1:6000 dilution.

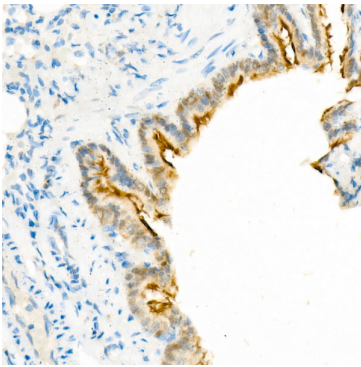
Secondary antibody: HRP-conjugated Goat anti-Rabbit IgG (H+L) (AS014) at 1:10000 dilution.

Lysates / proteins: 25 µg per lane.

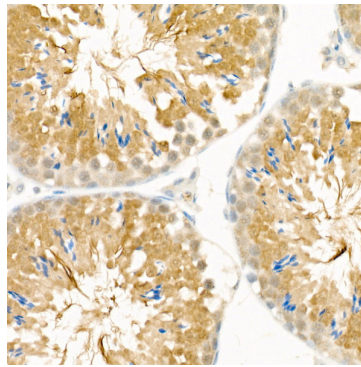
Blocking buffer: 3 % nonfat dry milk in TBST.

Detection: ECL Basic Kit (RM00020).

Exposure time: 90s.



Immunohistochemistry analysis of paraffin-embedded Rat bronchus tissue using CFAP20/GTL3 Rabbit mAb (A24115) at a dilution of 1:300 (40x lens). High pressure antigen retrieval was performed with 0.01 M citrate buffer (pH 6.0) prior to IHC staining.



Immunohistochemistry analysis of paraffin-embedded Mouse testis tissue using CFAP20/GTL3 Rabbit mAb (A24115) at a dilution of 1:300 (40x lens). High pressure antigen retrieval was performed with 0.01 M citrate buffer (pH 6.0) prior to IHC staining.