

A24008

Leader in Biomolecular Solutions for Life Science



Collagen IV Rabbit mAb

Catalog No.: A24008

Recombinant

1 Publications

Basic Information

Observed MW

50-240kDa

Calculated MW

164kDa

Category

SMab Recombinant Monoclonal
Antibody

Applications

WB,ELISA,DB

Cross-Reactivity

Human,Mouse,Rat

CloneNo number

ARC62585

Background

This gene encodes one of the six subunits of type IV collagen, the major structural component of basement membranes. This particular collagen IV subunit, however, is only found in a subset of basement membranes. Like the other members of the type IV collagen gene family, this gene is organized in a head-to-head conformation with another type IV collagen gene so that each gene pair shares a common promoter. Mutations in this gene are associated with type II autosomal recessive Alport syndrome (hereditary glomerulonephropathy) and with familial benign hematuria (thin basement membrane disease). Two transcripts, differing only in their transcription start sites, have been identified for this gene and, as is common for collagen genes, multiple polyadenylation sites are found in the 3' UTR.

Recommended Dilutions

WB 1:1000 - 1:6000

DB 1:500 - 1:1000

ELISA Recommended starting concentration is 1 µg/mL. Please optimize the concentration based on your specific assay requirements.

Immunogen Information

Gene ID

1286/1288/1284/1282

Swiss Prot

P53420/Q14031/P08572/P02462

Immunogen

Recombinant fusion protein containing a sequence corresponding to amino acids 1573-1690 of human COL4A4 (NP_000083.3).

Synonyms

BFH; ATS2; BFH1; CA44; Collagen IV

Contact



www.abclonal.com

Product Information

Source

Rabbit

Isotype

IgG

Purification

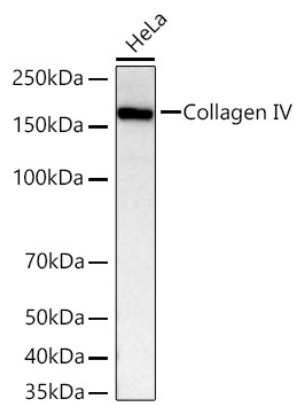
Affinity purification

Storage

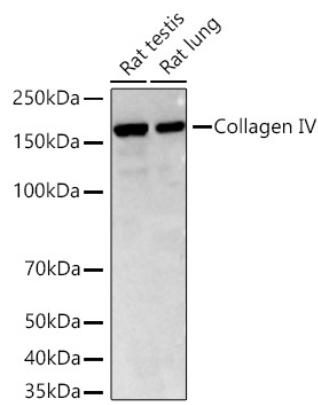
Store at -20°C. Avoid freeze / thaw cycles.

Buffer: PBS with 0.09% Sodium azide,0.05% BSA,50% glycerol,pH7.3.

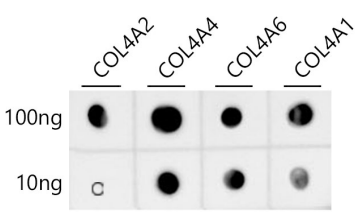
Validation Data



Western blot analysis of lysates from HeLa cells using Collagen IV Rabbit mAb (A24008) at 1:7000 dilution incubated at room temperature for 1.5 hours.
Secondary antibody: HRP-conjugated Goat anti-Rabbit IgG (H+L) (AS014) at 1:10000 dilution.
Lysates/proteins: 25 µg per lane.
Blocking buffer: 3% nonfat dry milk in TBST.
Detection: ECL Basic Kit (RM00020).
Exposure time: 10s.



Western blot analysis of various lysates using Collagen IV Rabbit mAb (A24008) at 1:7000 dilution incubated at room temperature for 1.5 hours.
Secondary antibody: HRP-conjugated Goat anti-Rabbit IgG (H+L) (AS014) at 1:10000 dilution.
Lysates/proteins: 25 µg per lane.
Blocking buffer: 3% nonfat dry milk in TBST.
Detection: ECL Basic Kit (RM00020).
Exposure time: 45s.



Dot-blot analysis of all sorts of peptides using Collagen IV Rabbit mAb antibody (A24008) at 1:1000 dilution.