

A24006

Leader in Biomolecular Solutions for Life Science



14-3-3 zeta/YWHAZ Rabbit mAb

Catalog No.: A24006 **Recombinant**

Basic Information

Observed MW

30kDa

Calculated MW

19kDa/28kDa

Category

SMab Recombinant Monoclonal Antibody

Applications

WB,IF/ICC,ELISA

Cross-Reactivity

Human,Mouse,Rat

CloneNo number

ARC62843

Recommended Dilutions

WB 1:9000 - 1:54000

IF/ICC 1:200 - 1:400

ELISA Recommended starting concentration is 1 µg/mL. Please optimize the concentration based on your specific assay requirements.

Contact

 www.abclonal.com

Background

This gene product belongs to the 14-3-3 family of proteins which mediate signal transduction by binding to phosphoserine-containing proteins. This highly conserved protein family is found in both plants and mammals, and this protein is 99% identical to the mouse, rat and sheep orthologs. The encoded protein interacts with IRS1 protein, suggesting a role in regulating insulin sensitivity. Several transcript variants that differ in the 5' UTR but that encode the same protein have been identified for this gene.

Immunogen Information

Gene ID

7534

Swiss Prot

P63104

Immunogen

Synthetic peptide. This information is considered to be commercially sensitive.

Synonyms

HEL4; YWHAD; KCIP-1; HEL-S-3; POPCHAS; HEL-S-93; 14-3-3-zeta; 14-3-3 zeta/YWHAZ

Product Information

Source

Rabbit

Isotype

IgG

Purification

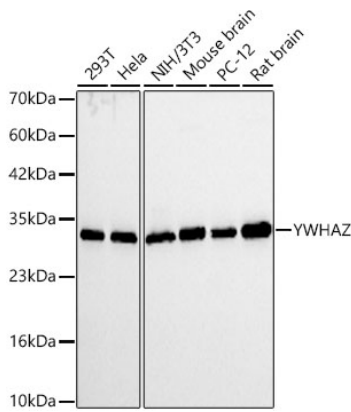
Affinity purification

Storage

Store at -20°C. Avoid freeze / thaw cycles.

Buffer: PBS containing 50% glycerol and 0.05% BSA, preserved with proclin300 or sodium azide (as specified on the Certificate of Analysis), pH 7.3.

Validation Data



Western blot analysis of various lysates, using YWHAZ Rabbit mAb (A24006) at 1:9000 dilution.

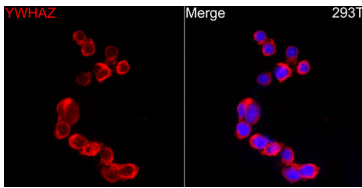
Secondary antibody: HRP-conjugated Goat anti-Rabbit IgG (H+L) (AS014) at 1:10000 dilution.

Lysates/proteins: 25µg per lane.

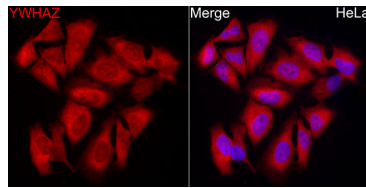
Blocking buffer: 3% nonfat dry milk in TBST.

Detection: ECL Basic Kit (RM00020).

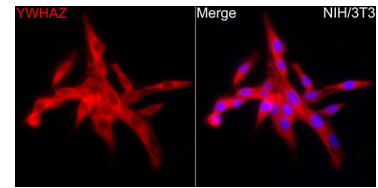
Exposure time: 5s.



Immunofluorescence analysis of 293T cells using YWHAZ Rabbit mAb (A24006) at dilution of 1:200 (40x lens). Secondary antibody: Cy3-conjugated Goat anti-Rabbit IgG (H+L) (AS007) at 1:500 dilution. Blue: DAPI for nuclear staining.



Immunofluorescence analysis of HeLa cells using YWHAZ Rabbit mAb (A24006) at dilution of 1:200 (40x lens). Secondary antibody: Cy3-conjugated Goat anti-Rabbit IgG (H+L) (AS007) at 1:500 dilution. Blue: DAPI for nuclear staining.



Immunofluorescence analysis of NIH/3T3 cells using YWHAZ Rabbit mAb (A24006) at dilution of 1:200 (40x lens). Secondary antibody: Cy3-conjugated Goat anti-Rabbit IgG (H+L) (AS007) at 1:500 dilution. Blue: DAPI for nuclear staining.