

A2392

Leader in Biomolecular Solutions for Life Science



HEC1/NDC80 Rabbit mAb

Catalog No.: A2392 **Recombinant**

Basic Information

Observed MW

76kDa

Calculated MW

74kDa

Category

SMab Recombinant Monoclonal Antibody

Applications

WB,ELISA

Cross-Reactivity

Human

CloneNo number

ARC0741

Recommended Dilutions

WB 1:500 - 1:2000

ELISA Recommended starting concentration is 1 µg/mL. Please optimize the concentration based on your specific assay requirements.

Contact

 www.abclonal.com

Background

This gene encodes a component of the NDC80 kinetochore complex. The encoded protein consists of an N-terminal microtubule binding domain and a C-terminal coiled-coiled domain that interacts with other components of the complex. This protein functions to organize and stabilize microtubule-kinetochore interactions and is required for proper chromosome segregation.

Immunogen Information

Gene ID

10403

Swiss Prot

O14777

Immunogen

A synthetic peptide corresponding to a sequence within amino acids 543-642 of human HEC1/NDC80 (O14777).

Synonyms

HEC; HEC1; TID3; KNTC2; HsHec1; hsNDC80; HEC1/NDC80

Product Information

Source

Rabbit

Isotype

IgG

Purification

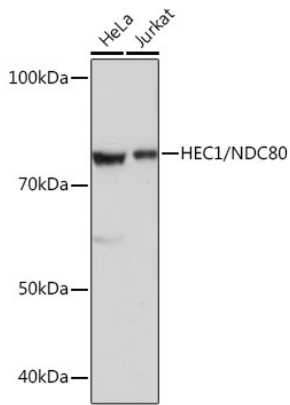
Affinity purification

Storage

Store at -20°C. Avoid freeze / thaw cycles.

Buffer: PBS with 0.02% sodium azide,0.05% BSA,50% glycerol,pH7.3.

Validation Data



Western blot analysis of various lysates using HEC1/NDC80 Rabbit mAb (A2392) at 1 : 1000 dilution.
Secondary antibody: HRP-conjugated Goat anti-Rabbit IgG (H+L) (AS014) at 1:10000 dilution.
Lysates/proteins: 25µg per lane.
Blocking buffer: 3% nonfat dry milk in TBST.
Detection: ECL Basic Kit (RM00020).
Exposure time: 3s.