

A23911

Leader in Biomolecular Solutions for Life Science



# LYRIC/AEG1 Rabbit mAb

Catalog No.: A23911 **Recombinant**

## Basic Information

### Observed MW

Refer to figures

### Calculated MW

64kDa

### Category

SMab Recombinant Monoclonal Antibody

### Applications

IHC-P,ELISA

### Cross-Reactivity

Human,Mouse,Rat

### CloneNo number

ARC62211

## Background

Enables NF-kappaB binding activity; double-stranded RNA binding activity; and transcription coactivator activity. Involved in several processes, including lipopolysaccharide-mediated signaling pathway; positive regulation of intracellular signal transduction; and regulation of transcription, DNA-templated. Located in endoplasmic reticulum; nuclear lumen; and perinuclear region of cytoplasm. Implicated in hepatocellular carcinoma.

## Recommended Dilutions

IHC-P 1:50 - 1:200

## Immunogen Information

### Gene ID

92140

### Swiss Prot

Q86UE4

### Immunogen

A synthetic peptide corresponding to a sequence within amino acids 308-407 of human LYRIC/AEG1 (NP\_848927.2).

### Synonyms

3D3; AEG1; AEG-1; LYRIC; LYRIC/3D3; LYRIC/AEG1

## Contact

 [www.abclonal.com](http://www.abclonal.com)

## Product Information

### Source

Rabbit

### Isotype

IgG

### Purification

Affinity purification

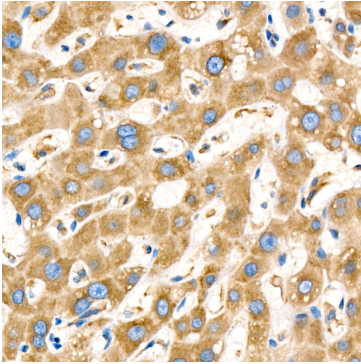
### Storage

Store at -20°C. Avoid freeze / thaw cycles.

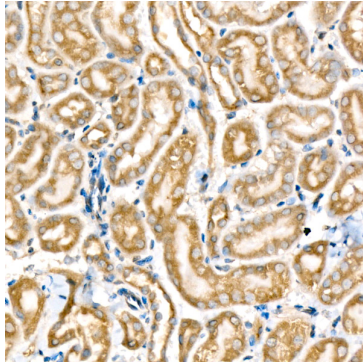
Buffer: PBS with 0.05% proclin300,0.05% BSA,50% glycerol,pH7.3.

## Validation Data

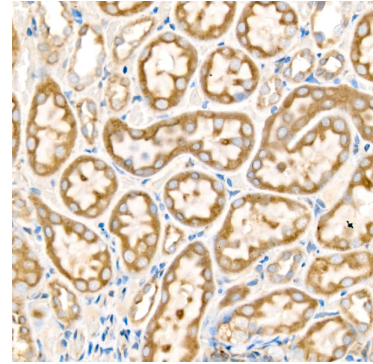
---



Immunohistochemistry analysis of paraffin-embedded Human liver using MTDH Rabbit mAb (A23911) at dilution of 1:300 (40x lens). High pressure antigen retrieval performed with 0.01M Citrate Bufferr (pH 6.0) prior to IHC staining.



Immunohistochemistry analysis of paraffin-embedded Mouse kidney using MTDH Rabbit mAb (A23911) at dilution of 1:300 (40x lens). High pressure antigen retrieval performed with 0.01M Citrate Bufferr (pH 6.0) prior to IHC staining.



Immunohistochemistry analysis of paraffin-embedded Rat kidney using MTDH Rabbit mAb (A23911) at dilution of 1:300 (40x lens). High pressure antigen retrieval performed with 0.01M Citrate Bufferr (pH 6.0) prior to IHC staining.