

A23882SP

Leader in Biomolecular Solutions for Life Science



www.abclonal.com

p16 INK4A Rabbit pAb

Catalog No.: A23882SP **7 Publications**

Basic Information

Observed MW

16 kDa

Calculated MW

8-17 kDa

Category

Polyclonal Antibody

Applications

WB,IHC-P,IF/ICC,IP,ELISA

Cross-Reactivity

Human,Mouse

Background

Enables MDM2/MDM4 family protein binding activity; enzyme inhibitor activity; and protein N-terminus binding activity. Involved in several processes, including negative regulation of lymphocyte proliferation; positive regulation of apoptotic process; and regulation of transcription, DNA-templated. Acts upstream of or within several processes, including negative regulation of cellular protein metabolic process; negative regulation of mammary gland epithelial cell proliferation; and positive regulation of apoptotic process involved in mammary gland involution. Located in cytoplasm and granular component. Part of protein-containing complex. Is expressed in several structures, including bone marrow; central nervous system; dorsal root ganglion; eye; and testis. Human ortholog(s) of this gene implicated in several diseases, including breast cancer (multiple); carcinoma (multiple); hematologic cancer (multiple); melanoma (multiple); and nervous system cancer (multiple). Orthologous to human CDKN2A (cyclin dependent kinase inhibitor 2A).

Recommended Dilutions

WB 1:1000 - 1:2000

IP 0.5 µg - 4 µg antibody
for 400 µg - 600 µg
extracts of whole cells

IF/ICC 1:200 - 1:800

IHC-P 1:1000 - 1:4000

ELISA Recommended starting concentration is 1 µg/mL. Please optimize the concentration based on your specific assay requirements. For high-ratio antibody dilutions ($\geq 1:10000$), a sequential dilution method is strongly recommended to ensure measurement accuracy.

Immunogen Information

Gene ID

1029/12578

Swiss Prot

P42771/P51480

Immunogen

This information is considered to be commercially sensitive.

Synonyms

Arf; p16; MTS1; Pctr1; p19ARF; p16INK4a; p19<ARF>; ARF-INK4a; INK4a-ARF; Ink4a/Arf; p16(INK4a); p16 INK4A

Product Information

Source

Rabbit

Isotype

IgG

Purification

Affinity purification

Storage

Store at -20°C. Avoid freeze / thaw cycles.

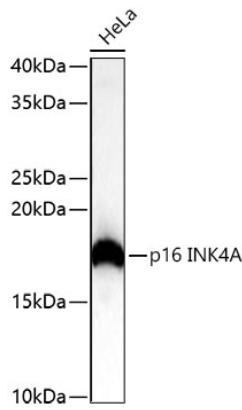
Buffer: PBS, pH 7.3, containing 50% glycerol. Preserved with Proclin300 or sodium azide. May contain 0.05% BSA as specified on the Certificate of Analysis.

Contact



www.abclonal.com

Validation Data



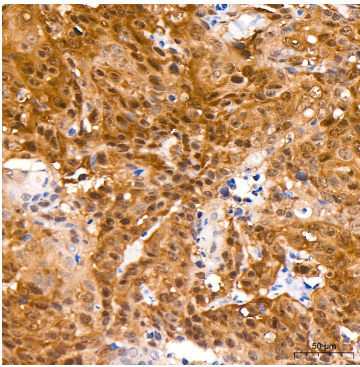
Western blot analysis of lysates from HeLa cells using p16 INK4A Rabbit pAb (A23882SP) at 1:2000 dilution incubated at room temperature for 1.5 hours. Secondary antibody: HRP-conjugated Goat anti-Rabbit IgG (H+L) (AS014) at 1:10000 dilution.

Lysates/proteins: 25 µg per lane.

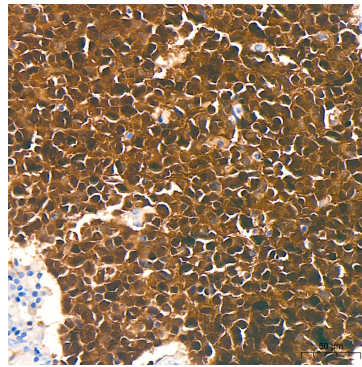
Blocking buffer: 3% nonfat dry milk in TBST.

Detection: ECL Basic Kit (RM00020).

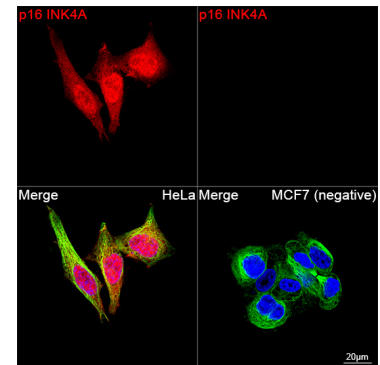
Exposure time: 90 s.



Immunohistochemistry analysis of paraffin-embedded Human cervix cancer tissue using p16 INK4A Rabbit pAb (A23882SP) at a dilution of 1:1500 (40x lens). High pressure antigen retrieval performed with 0.01M Tris-EDTA Buffer (pH 9.0) prior to IHC staining.



Immunohistochemistry analysis of paraffin-embedded Human lung squamous carcinoma tissue using p16 INK4A Rabbit pAb (A23882SP) at a dilution of 1:1500 (40x lens). High pressure antigen retrieval performed with 0.01M Tris-EDTA Buffer (pH 9.0) prior to IHC staining.



Confocal imaging of HeLa cells and MCF7 (negative) cells using p16 INK4A Rabbit pAb (A23882SP, dilution 1:200) followed by a further incubation with Cy3-conjugated Goat anti-Rabbit IgG (H+L) (AS007, dilution 1:500) (Red). The cells were counterstained with α-Tubulin Mouse mAb (AC012, dilution 1:400) followed by incubation with ABflo® 488-conjugated Goat Anti-Mouse IgG (H+L) Ab (AS076, dilution 1:500) (Green). DAPI was used for nuclear staining (Blue). Objective: 100x.