

A23841

Leader in Biomolecular Solutions for Life Science



Claudin-4 Rabbit mAb

Catalog No.: A23841

Recombinant

1 Publications

Basic Information

Observed MW

18kDa/

Calculated MW

22kDa

Category

SMab Recombinant Monoclonal
Antibody

Applications

WB,IHC-P,IP,ELISA

Cross-Reactivity

Human

CloneNo number

ARC61052

Background

The protein encoded by this intronless gene belongs to the claudin family. Claudins are integral membrane proteins that are components of the epithelial cell tight junctions, which regulate movement of solutes and ions through the paracellular space. This protein is a high-affinity receptor for Clostridium perfringens enterotoxin (CPE) and may play a role in internal organ development and function during pre- and postnatal life. This gene is deleted in Williams-Beuren syndrome, a neurodevelopmental disorder affecting multiple systems.

Recommended Dilutions

WB 1:7000 - 1:28000

IHC-P 1:1000 - 1:3000

IP 0.5µg-4µg antibody for
400µg-600µg extracts
of whole cells

ELISA Recommended starting
concentration is 1
µg/mL. Please optimize
the concentration
based on your specific
assay requirements.

Immunogen Information

Gene ID

1364

Swiss Prot

O14493

Immunogen

A synthetic peptide corresponding to a sequence within amino acids 111-209 of human Claudin-4 (NP_001296.1).

Synonyms

CLDN4; CPE-R; CPER; CPETR; CPETR1; WBSCR8; hCPE-R; claudin-4; Claudin-4

Product Information

Source

Rabbit

Isotype

IgG

Purification

Affinity purification

Storage

Store at -20°C. Avoid freeze / thaw cycles.

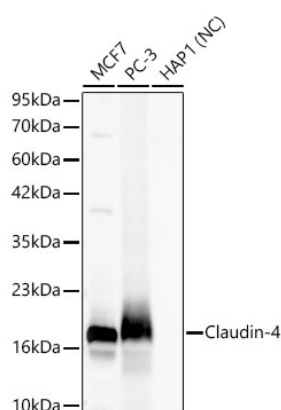
Buffer: PBS with 0.05% proclin300,0.05% BSA,50% glycerol,pH7.3.

Contact



www.abclonal.com

Validation Data



Western blot analysis of various lysates using Claudin-4 Rabbit mAb (A23841) at 1:7000 dilution.

Secondary antibody: HRP-conjugated Goat anti-Rabbit IgG (H+L) (AS014) at 1:10000 dilution.

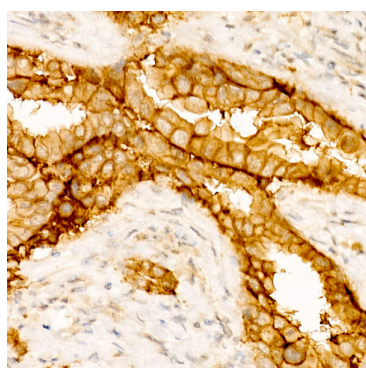
Lysates/proteins: 25µg per lane.

Blocking buffer: 3% nonfat dry milk in TBST.

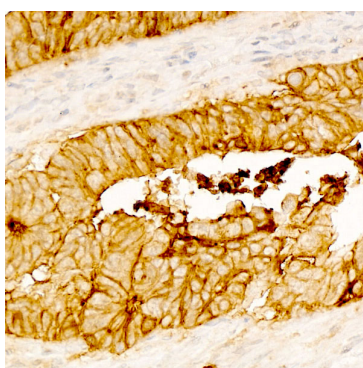
Detection: ECL Basic Kit (RM00020).

Negative control (NC): HAP1

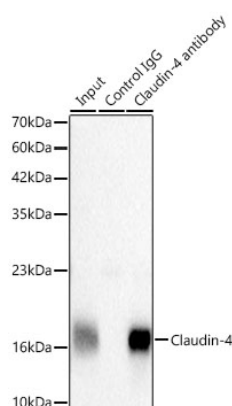
Exposure time: 20s.



Immunohistochemistry analysis of paraffin-embedded Human breast tissue using Claudin-4 Rabbit mAb (A23841) at dilution of 1:3000 (40x lens). High pressure antigen retrieval performed with 0.01M Tris/EDTA Buffer (pH 9.0) prior to IHC staining.



Immunohistochemistry analysis of paraffin-embedded Human colon carcinoma tissue using Claudin-4 Rabbit mAb (A23841) at dilution of 1:3000 (40x lens). High pressure antigen retrieval performed with 0.01M Tris/EDTA Buffer (pH 9.0) prior to IHC staining.



Immunoprecipitation of Claudin-4 from 500 µg extracts of MCF7 cells was performed using 2 µg of Claudin-4 Rabbit mAb (A23841). Rabbit IgG isotype control (AC042) was used to precipitate the Control IgG sample. IP samples were eluted with 1X non-reducing Laemmli Buffer. The Input lane represents 10% of the total input. Western blot analysis of immunoprecipitates was conducted using Claudin-4 Rabbit mAb (A23841) at a dilution of 1:5000.