

A23782

Leader in Biomolecular Solutions for Life Science



TWIST1 Rabbit mAb

Catalog No.: A23782

Recombinant

Basic Information

Observed MW

Calculated MW

20kDa

Category

SMab Recombinant Monoclonal
Antibody

Applications

IHC-P,ELISA,IF-P

Cross-Reactivity

Mouse,Rat

CloneNo number

ARC60802

Recommended Dilutions

IF-P 1:50 - 1:200

IHC-P 1:1000 - 1:5000

ELISA Recommended starting concentration is 1 µg/mL. Please optimize the concentration based on your specific assay requirements.

Contact

 www.abclonal.com

Background

This gene encodes a basic helix-loop-helix (bHLH) transcription factor that plays an important role in embryonic development. The encoded protein forms both homodimers and heterodimers that bind to DNA E box sequences and regulate the transcription of genes involved in cranial suture closure during skull development. This protein may also regulate neural tube closure, limb development and brown fat metabolism. This gene is hypermethylated and overexpressed in multiple human cancers, and the encoded protein promotes tumor cell invasion and metastasis, as well as metastatic recurrence. Mutations in this gene cause Saethre-Chotzen syndrome in human patients, which is characterized by craniosynostosis, ptosis and hypertelorism.

Immunogen Information

Gene ID

7291

Swiss Prot

Q15672

Immunogen

Synthetic peptide. This information is considered to be commercially sensitive.

Synonyms

TWIST1; ACS3; BPES2; BPES3; CRS; CRS1; CSO; SCS; TWIST; bHLHa38; twist-related protein 1

Product Information

Source

Rabbit

Isotype

IgG

Purification

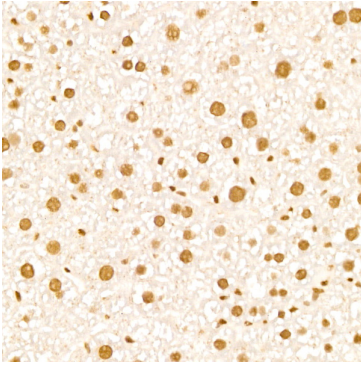
Affinity purification

Storage

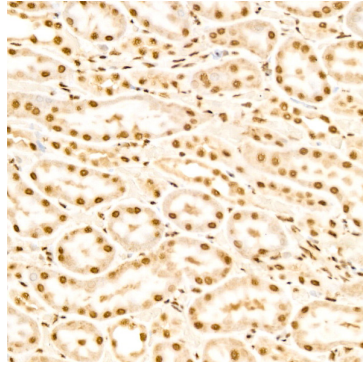
Store at -20°C. Avoid freeze / thaw cycles.

Buffer: PBS containing 50% glycerol and 0.05% BSA, preserved with proclin300 or sodium azide (as specified on the Certificate of Analysis), pH 7.3.

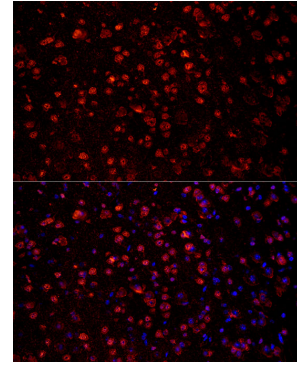
Validation Data



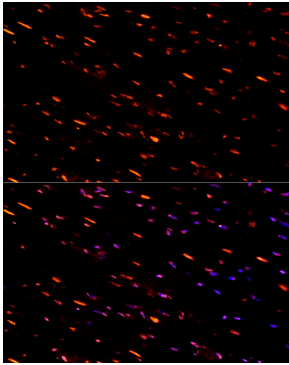
Immunohistochemistry analysis of paraffin-embedded Mouse liver using TWIST1 Rabbit mAb (A23782) at dilution of 1:2000 (40x lens). High pressure antigen retrieval performed with 0.01M Citrate buffer (pH 6.0) prior to IHC staining.



Immunohistochemistry analysis of paraffin-embedded Rat kidney using TWIST1 Rabbit mAb (A23782) at dilution of 1:2000 (40x lens). High pressure antigen retrieval performed with 0.01M Citrate buffer (pH 6.0) prior to IHC staining.



Perform high pressure antigen retrieval with 10 mM citrate buffer pH 6.0 before commencing with IF staining protocol. Immunofluorescence analysis of paraffin-embedded mouse brain using TWIST1 Rabbit mAb (A23782) at dilution of 1:100 (40x lens). Secondary antibody: Cy3-conjugated Goat anti-Rabbit IgG (H+L) (AS007) at 1:500 dilution. Blue: DAPI for nuclear staining.



Perform high pressure antigen retrieval with 10 mM citrate buffer pH 6.0 before commencing with IF staining protocol. Immunofluorescence analysis of paraffin-embedded rat heart using TWIST1 Rabbit mAb (A23782) at dilution of 1:100 (40x lens). Secondary antibody: Cy3-conjugated Goat anti-Rabbit IgG (H+L) (AS007) at 1:500 dilution. Blue: DAPI for nuclear staining.