

A23781

Leader in Biomolecular Solutions for Life Science



# GABARAPL1 Rabbit mAb

Catalog No.: A23781 **Recombinant**

## Basic Information

### Observed MW

16-18kDa

### Calculated MW

14kDa/17kDa

### Category

SMab Recombinant Monoclonal Antibody

### Applications

WB,IHC-P,ELISA

### Cross-Reactivity

Human,Mouse,Rat

### CloneNo number

ARC61739

## Background

Enables Tat protein binding activity and ubiquitin protein ligase binding activity. Predicted to be involved in autophagosome assembly; autophagy of mitochondrion; and cellular response to nitrogen starvation. Located in autophagosome. Colocalizes with mitochondrion.

## Recommended Dilutions

**WB** 1:1000 - 1:2000

**IHC-P** 1:100 - 1:500

## Immunogen Information

### Gene ID

23710

### Swiss Prot

Q9HOR8

### Immunogen

A synthetic peptide corresponding to a sequence within amino acids 1-100 of human GABARAPL1. (NP\_113600.1).

### Synonyms

GABARAPL1; APG8-LIKE; APG8L; ATG8; ATG8B; ATG8L; GEC1; GABA type A receptor associated protein like 1

## Contact

 [www.abclonal.com](http://www.abclonal.com)

## Product Information

### Source

Rabbit

### Isotype

IgG

### Purification

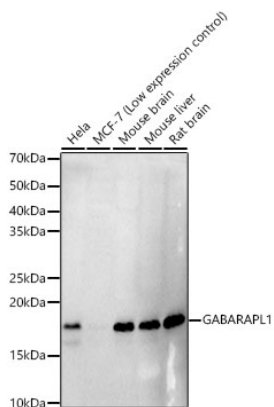
Affinity purification

### Storage

Store at -20°C. Avoid freeze / thaw cycles.

Buffer: PBS with 0.05% proclin300,0.05% BSA,50% glycerol,pH7.3.

## Validation Data



Western blot analysis of various lysates, using GABARAPL1 Rabbit mAb (A23781) at 1:2000 dilution.

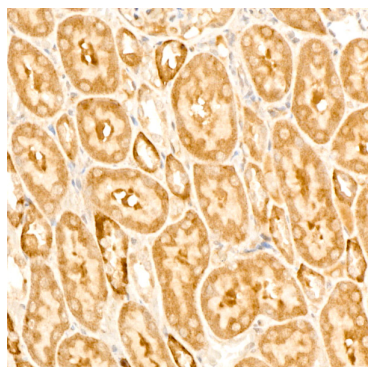
Secondary antibody: HRP Goat Anti-Rabbit IgG (H+L) (AS014) at 1:10000 dilution.

Lysates/proteins: 25µg per lane.

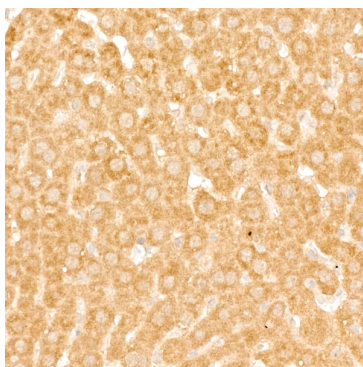
Blocking buffer: 3% nonfat dry milk in TBST.

Detection: ECL Basic Kit (RM00020).

Exposure time: 90s.



Immunohistochemistry analysis of paraffin-embedded Rat kidney using GABARAPL1 Rabbit mAb (A23781) at dilution of 1:300 (40x lens). High pressure antigen retrieval performed with 0.01M Citrate Bufferr (pH 6.0) prior to IHC staining.



Immunohistochemistry analysis of paraffin-embedded Rat liver using GABARAPL1 Rabbit mAb (A23781) at dilution of 1:300 (40x lens). High pressure antigen retrieval performed with 0.01M Citrate Bufferr (pH 6.0) prior to IHC staining.