

A23777

Leader in Biomolecular Solutions for Life Science



## PKC zeta Rabbit mAb

Catalog No.: A23777

Recombinant

### Basic Information

#### Observed MW

75kDa

#### Calculated MW

46kDa/56kDa/67kDa

#### Category

SMab Recombinant Monoclonal  
Antibody

#### Applications

WB,ELISA

#### Cross-Reactivity

Human

#### CloneNo number

ARC61755

### Background

Protein kinase C (PKC) zeta is a member of the PKC family of serine/threonine kinases which are involved in a variety of cellular processes such as proliferation, differentiation and secretion. Unlike the classical PKC isoenzymes which are calcium-dependent, PKC zeta exhibits a kinase activity which is independent of calcium and diacylglycerol but not of phosphatidylserine. Furthermore, it is insensitive to typical PKC inhibitors and cannot be activated by phorbol ester. Unlike the classical PKC isoenzymes, it has only a single zinc finger module. These structural and biochemical properties indicate that the zeta subspecies is related to, but distinct from other isoenzymes of PKC. Alternative splicing results in multiple transcript variants encoding different isoforms.

### Recommended Dilutions

WB 1:500 - 1:1000

### Immunogen Information

#### Gene ID

5590

#### Swiss Prot

Q05513

#### Immunogen

Recombinant fusion protein containing a sequence corresponding to amino acids 1-100 of human PKC zeta. (NP\_002735.3).

#### Synonyms

PRKCZ; PKC-ZETA; PKC2; protein kinase C zeta; PKC zeta

### Contact



[www.abclonal.com](http://www.abclonal.com)

### Product Information

#### Source

Rabbit

#### Isotype

IgG

#### Purification

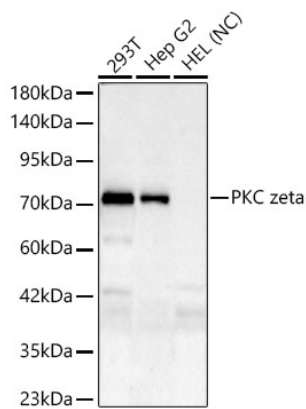
Affinity purification

#### Storage

Store at -20°C. Avoid freeze / thaw cycles.

Buffer: PBS with 0.05% proclin300,0.05% BSA,50% glycerol,pH7.3.

## Validation Data



Western blot analysis of various lysates, using PKC zeta Rabbit mAb (A23777) at 1:1000 dilution.

Secondary antibody: HRP Goat Anti-Rabbit IgG (H+L) (AS014) at 1:10000 dilution.

Lysates/proteins: 25µg per lane.

Blocking buffer: 3% nonfat dry milk in TBST.

Detection: ECL Basic Kit (RM00020).

Negative control (NC): HEL

Exposure time: 180s.