

A23761

Leader in Biomolecular Solutions for Life Science



Giantin Rabbit mAb

Catalog No.: A23761

Recombinant

Basic Information

Observed MW

Refer to figures

Calculated MW

376KDa

Category

SMab Recombinant Monoclonal
Antibody

Applications

IHC-P,ELISA

Cross-Reactivity

Human

CloneNo number

ARC61107

Background

Enables RNA binding activity. Involved in protein localization to pericentriolar material. Located in Golgi apparatus and endoplasmic reticulum-Golgi intermediate compartment.

Recommended Dilutions

IHC-P 1:100 - 1:500

ELISA Recommended starting concentration is 1 µg/mL. Please optimize the concentration based on your specific assay requirements.

Immunogen Information

Gene ID

2804

Swiss Prot

Q14789

Immunogen

Recombinant protein of human Giantin.

Synonyms

GCP; GCP372; GOLIM1; Giantin

Contact



www.abclonal.com

Product Information

Source

Rabbit

Isotype

IgG

Purification

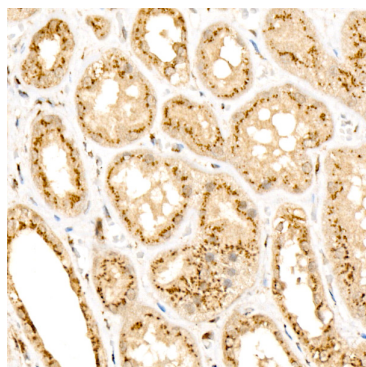
Affinity purification

Storage

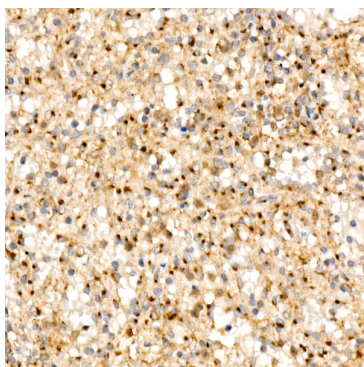
Store at -20°C. Avoid freeze / thaw cycles.

Buffer: PBS with 0.05% proclin300,0.05% BSA,50% glycerol,pH7.3.

Validation Data



Immunohistochemistry analysis of paraffin-embedded Human kidney using Giantin Rabbit mAb (A23761) at dilution of 1:100 (40x lens). High pressure antigen retrieval performed with 0.01M Citrate Bufferr (pH 6.0) prior to IHC staining.



Immunohistochemistry analysis of paraffin-embedded Human spleen using Giantin Rabbit mAb (A23761) at dilution of 1:100 (40x lens). High pressure antigen retrieval performed with 0.01M Citrate Bufferr (pH 6.0) prior to IHC staining.