

A23751

Leader in Biomolecular Solutions for Life Science



# KLHDC2 Rabbit mAb

Catalog No.: A23751 **Recombinant**

## Basic Information

### Observed MW

46kDa

### Calculated MW

28kDa/46kDa

### Category

SMab Recombinant Monoclonal  
Antibody

### Applications

WB,IHC-P,ELISA

### Cross-Reactivity

Human,Mouse

### CloneNo number

ARC60813

## Recommended Dilutions

**WB** 1:500 - 1:1000

**IHC-P** 1:50 - 1:200

**ELISA** Recommended starting concentration is 1 µg/mL. Please optimize the concentration based on your specific assay requirements.

## Contact

 [www.abclonal.com](http://www.abclonal.com)

## Background

Enables ubiquitin ligase-substrate adaptor activity. Involved in ubiquitin-dependent protein catabolic process via the C-end degron rule pathway. Located in nuclear body and nuclear membrane. Is active in Cul2-RING ubiquitin ligase complex and nucleus.

## Immunogen Information

### Gene ID

23588

### Swiss Prot

Q9Y2U9

### Immunogen

A synthetic peptide corresponding to a sequence within amino acids 306-406 of human KLHDC2. (NP\_055130.1).

### Synonyms

KLHDC2; HCLP-1; HCLP1; LCP; kelch domain containing 2

## Product Information

### Source

Rabbit

### Isotype

IgG

### Purification

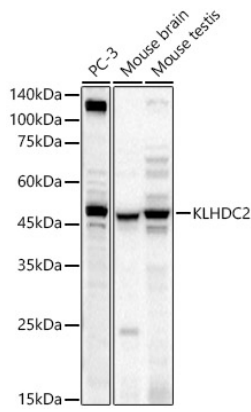
Affinity purification

### Storage

Store at -20°C. Avoid freeze / thaw cycles.

Buffer: PBS with 0.05% proclin300,0.05% BSA,50% glycerol,pH7.3.

## Validation Data



Western blot analysis of various lysates, using KLHDC2 Rabbit mAb (A23751) at 1:1000 dilution.

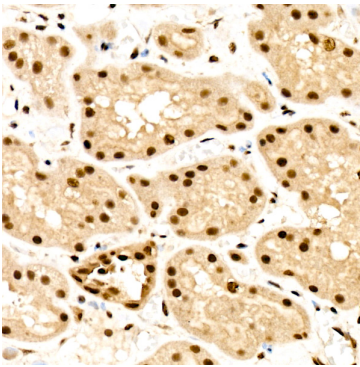
Secondary antibody: HRP-conjugated Goat anti-Rabbit IgG (H+L) (AS014) at 1:10000 dilution.

Lysates/proteins: 25µg per lane.

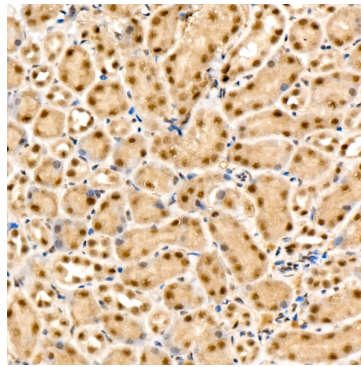
Blocking buffer: 3% nonfat dry milk in TBST.

Detection: ECL Basic Kit (RM00020).

Exposure time: 45s.



Immunohistochemistry analysis of paraffin-embedded Human kidney using KLHDC2 Rabbit mAb (A23751) at dilution of 1:100 (40x lens). High pressure antigen retrieval performed with 0.01M Citrate Bufferr (pH 6.0) prior to IHC staining.



Immunohistochemistry analysis of paraffin-embedded Mouse kidney using KLHDC2 Rabbit mAb (A23751) at dilution of 1:100 (40x lens). High pressure antigen retrieval performed with 0.01M Citrate Bufferr (pH 6.0) prior to IHC staining.