

A23677

Leader in Biomolecular Solutions for Life Science



[KD Validated] CLIC1 Rabbit pAb

Catalog No.: A23677

Basic Information

Observed MW

Refer to figures

Calculated MW

27kDa

Category

Polyclonal Antibody

Applications

WB,IF/ICC,IP,ELISA

Cross-Reactivity

Human,Mouse,Rat

Background

Chloride channels are a diverse group of proteins that regulate fundamental cellular processes including stabilization of cell membrane potential, transepithelial transport, maintenance of intracellular pH, and regulation of cell volume. Chloride intracellular channel 1 is a member of the p64 family; the protein localizes principally to the cell nucleus and exhibits both nuclear and plasma membrane chloride ion channel activity.

Recommended Dilutions

WB 1:500 - 1:1000

IF/ICC 1:50 - 1:200

IP 0.5µg-4µg antibody for
200µg-400µg extracts
of whole cells

ELISA Recommended starting
concentration is 1
µg/mL. Please optimize
the concentration
based on your specific
assay requirements.

Immunogen Information

Gene ID

1192

Swiss Prot

O00299

Immunogen

Recombinant Protein corresponding to a sequence within amino acids 42-241 of human CLIC1(NP_001279.2).

Synonyms

G6; CL1C1; NCC27; CLCNL1; [KD Validated] CLIC1

Product Information

Source

Rabbit

Isotype

IgG

Purification

Affinity purification

Storage

Store at -20°C. Avoid freeze / thaw cycles.

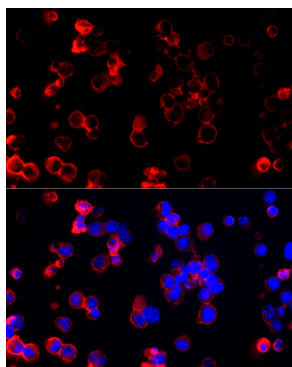
Buffer: PBS with 0.05% proclin300,50% glycerol,pH7.3.

Contact

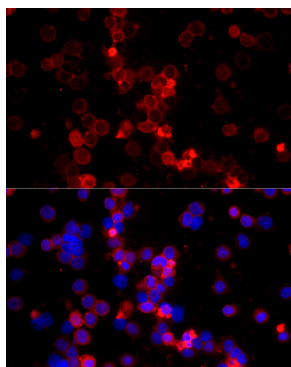


www.abclonal.com

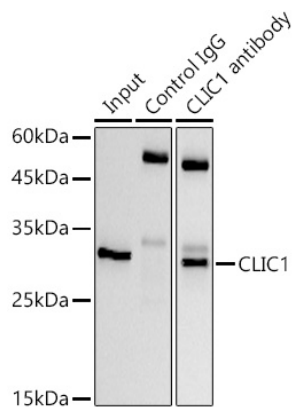
Validation Data



Immunofluorescence analysis of K-562 cells using [KD Validated] CLIC1 Rabbit pAb (A23677) at dilution of 1:200 (40x lens). Secondary antibody: Cy3-conjugated Goat anti-Rabbit IgG (H+L) (AS007) at 1:500 dilution. Blue: DAPI for nuclear staining.



Immunofluorescence analysis of THP-1 cells using [KD Validated] CLIC1 Rabbit pAb (A23677) at dilution of 1:200 (40x lens). Secondary antibody: Cy3-conjugated Goat anti-Rabbit IgG (H+L) (AS007) at 1:500 dilution. Blue: DAPI for nuclear staining.



Immunoprecipitation analysis of 300 μ g extracts of HeLa cells using 3 μ g [KD Validated] CLIC1 Rabbit pAb (A23677). Western blot was performed from the immunoprecipitate using [KO Validated] CLIC1 Rabbit pAb (A23677) at a dilution of 1:2000.