

A23658

Leader in Biomolecular Solutions for Life Science



Osteopontin/OPN/SPP1 Rabbit pAb

Catalog No.: A23658

Basic Information

Observed MW

58-75kDa

Calculated MW

32kDa

Category

Polyclonal Antibody

Applications

WB,ELISA,IF-P

Cross-Reactivity

Mouse

Background

Enables extracellular matrix binding activity. Acts upstream of or within several processes, including cellular ion homeostasis; cellular response to leukemia inhibitory factor; and neutrophil chemotaxis. Located in apical part of cell and cytoplasm. Is expressed in several structures, including alimentary system; brain; metanephros; reproductive system; and skeleton. Human ortholog(s) of this gene implicated in several diseases, including autoimmune disease (multiple); biliary atresia; coronary artery disease (multiple); disease of cellular proliferation (multiple); and hepatitis. Orthologous to human SPP1 (secreted phosphoprotein 1).

Recommended Dilutions

WB 1:500 - 1:1000

IF-P 1:50 - 1:200

ELISA Recommended starting concentration is 1 µg/mL. Please optimize the concentration based on your specific assay requirements.

Immunogen Information

Gene ID

20750

Swiss Prot

P10923

Immunogen

Recombinant protein (or fragment). This information is considered to be commercially sensitive.

Synonyms

OP; 2AR; Bsp; Eta; Opn; Ric; BNSP; BSPI; Opnl; Apl-1; ETA-1; Spp-1; Osteopontin/OPN/SPP1

Contact

 www.abclonal.com

Product Information

Source

Rabbit

Isotype

IgG

Purification

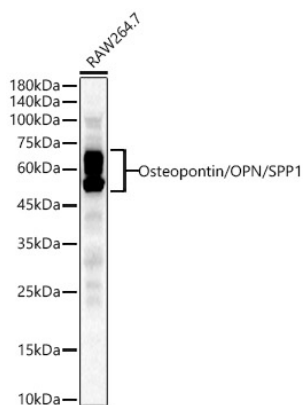
Affinity purification

Storage

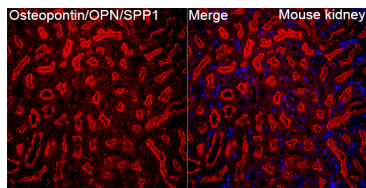
Store at -20°C. Avoid freeze / thaw cycles.

Buffer: PBS containing 50% glycerol, preserved with proclin300 or sodium azide (as specified on the Certificate of Analysis), pH 7.3.

Validation Data



Western blot analysis of lysates from RAW264.7 cells, using Osteopontin/OPN/SPP1 Rabbit pAb (A23658) at 1:700 dilution.
Secondary antibody: HRP-conjugated Goat anti-Rabbit IgG (H+L) (AS014) at 1:10000 dilution.
Lysates/proteins: 25µg per lane.
Blocking buffer: 3% nonfat dry milk in TBST.
Detection: ECL Basic Kit (RM00020).
Exposure time: 180s.



Immunofluorescence analysis of paraffin-embedded Mouse kidney tissue using Osteopontin/OPN/SPP1 Rabbit pAb (A23658) at a dilution of 1:100 (40x lens). Secondary antibody: Cy3-conjugated Goat anti-Rabbit IgG (H+L) (AS007) at 1:500 dilution. Blue: DAPI for nuclear staining. Perform high pressure antigen retrieval with 0.01 M citrate buffer (pH 6.0) prior to IF staining.