

A23651

Leader in Biomolecular Solutions for Life Science



IFN-beta Rabbit pAb

Catalog No.: A23651

1 Publications

Basic Information

Observed MW

63kDa (C-hFc&His tagged Active Recombinant Mouse IFN-beta Protein) , 24kDa/26kDa(Endogenous)

Calculated MW

22kDa

Category

Polyclonal Antibody

Applications

WB,IF/ICC,ELISA

Cross-Reactivity

Human,Mouse

Background

Enables cytokine activity and type I interferon receptor binding activity. Involved in B cell proliferation; cellular response to virus; and type I interferon signaling pathway. Acts upstream of or within several processes, including cellular response to organic cyclic compound; defense response to other organism; and negative regulation of osteoclast differentiation. Located in extracellular space. Is expressed in embryo and liver. Human ortholog(s) of this gene implicated in COVID-19. Orthologous to human IFNB1 (interferon beta 1).

Recommended Dilutions

WB 1:1000 - 1:5000

IF/ICC 1:50 - 1:200

ELISA Recommended starting concentration is 1 µg/mL. Please optimize the concentration based on your specific assay requirements.

Immunogen Information

Gene ID
15977

Swiss Prot
P01575

Immunogen

Recombinant protein (or fragment). This information is considered to be commercially sensitive.

Synonyms

Ifb; IFNB; If1da1; IFN-beta

Contact

 www.abclonal.com

Product Information

Source
Rabbit

Isotype
IgG

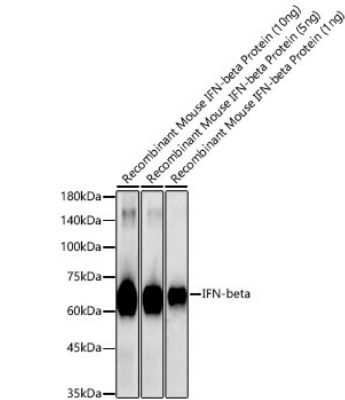
Purification
Affinity purification

Storage

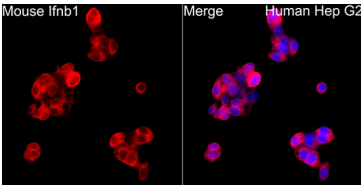
Store at -20°C. Avoid freeze / thaw cycles.

Buffer: PBS containing 50% glycerol, preserved with proclin300 or sodium azide (as specified on the Certificate of Analysis), pH 7.3.

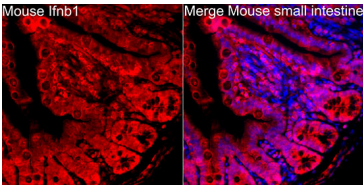
Validation Data



Western blot analysis of Recombinant Mouse IFN-beta Protein (RP01076) using IFN-beta Rabbit pAb (A23651) at 1:2000 dilution.
Secondary antibody: HRP-conjugated Goat anti-Rabbit IgG (H+L) (AS014) at 1:10000 dilution.
Lysates/proteins: 10ng/5ng/1ng per lane.
Blocking buffer: 3% nonfat dry milk in TBST.
Detection: ECL Basic Kit (RM00020).
Exposure time: 20s.



Immunofluorescence analysis of HepG2 cells using IFN-beta Rabbit pAb (A23651) at dilution of 1:200 (40x lens). Secondary antibody: Cy3-conjugated Goat anti-Rabbit IgG (H+L) (AS007) at 1:500 dilution. Blue: DAPI for nuclear staining.



Immunofluorescence analysis of paraffin-embedded mouse small intestine using IFN-beta Rabbit pAb (A23651) at dilution of 1:200 (40x lens). Secondary antibody: Cy3-conjugated Goat anti-Rabbit IgG (H+L) (AS007) at 1:500 dilution. Blue: DAPI for nuclear staining.