

A23650

Leader in Biomolecular Solutions for Life Science



Hmox1 Rabbit pAb

Catalog No.: A23650

Basic Information

Observed MW

30kDa/35kDa

Calculated MW

33kDa

Category

Polyclonal Antibody

Applications

WB,IHC-P,ELISA,IF-P

Cross-Reactivity

Mouse,Rat

Background

Predicted to enable several functions, including heme binding activity; heme oxygenase (decyclizing) activity; and protein homodimerization activity. Acts upstream of or within several processes, including cellular response to cisplatin; cellular response to metal ion; and regulation of macroautophagy. Located in nucleus. Is expressed in several structures, including alimentary system; central nervous system; early conceptus; genitourinary system; and sensory organ. Used to study hemochromatosis and malaria. Human ortholog(s) of this gene implicated in several diseases, including artery disease (multiple); cerebrovascular disease (multiple); factor VIII deficiency; lung disease (multiple); and sickle cell anemia. Orthologous to human HMOX1 (heme oxygenase 1).

Recommended Dilutions

WB 1:500 - 1:1000

IF-P 1:50 - 1:200

IHC-P 1:50 - 1:200

ELISA Recommended starting concentration is 1 µg/mL. Please optimize the concentration based on your specific assay requirements.

Immunogen Information

Gene ID

15368

Swiss Prot

P14901

Immunogen

Recombinant protein (or fragment). This information is considered to be commercially sensitive.

Synonyms

HO1; HO-1; Hmox; Hemox; Hsp32; D8Wsu38e; Hmox1

Product Information

Source

Rabbit

Isotype

IgG

Purification

Affinity purification

Storage

Store at -20°C. Avoid freeze / thaw cycles.

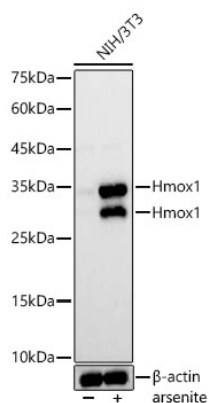
Buffer: PBS containing 50% glycerol, preserved with proclin300 or sodium azide (as specified on the Certificate of Analysis), pH 7.3.

Contact



www.abclonal.com

Validation Data



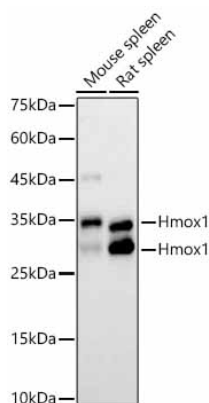
Western blot analysis of lysates from NIH/3T3 cells using Hmxo1 Rabbit pAb (A23650) at 1:1000 dilution. NIH/3T3 cells were treated with arsenite(50 μ M) at 37°C for 8 hours. Secondary antibody: HRP-conjugated Goat anti-Rabbit IgG (H+L) (AS014) at 1:10000 dilution.

Lysates/proteins: 25 μ g per lane.

Blocking buffer: 3% nonfat dry milk in TBST.

Detection: ECL Basic Kit (RM00020).

Exposure time: 1s.



Western blot analysis of various lysates using Hmxo1 Rabbit pAb (A23650) at 1:1000 dilution.

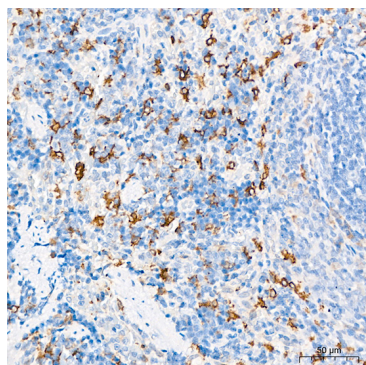
Secondary antibody: HRP-conjugated Goat anti-Rabbit IgG (H+L) (AS014) at 1:10000 dilution.

Lysates / proteins: 25 μ g per lane.

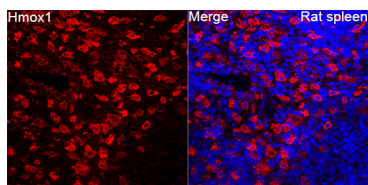
Blocking buffer: 3 % nonfat dry milk in TBST.

Detection: ECL Basic Kit (RM00020).

Exposure time: 30s.



Immunohistochemistry analysis of paraffin-embedded Rat spleen tissue using Hmxo1 Rabbit pAb (A23650) at a dilution of 1:200 (40x lens). High pressure antigen retrieval performed with 0.01M Citrate buffer (pH 6.0) prior to IHC staining.



Immunofluorescence analysis of Rat spleen tissue using Hmxo1 Rabbit pAb (A23650) at a dilution of 1:100 (40x lens). Secondary antibody: Cy3-conjugated Goat anti-Rabbit IgG (H+L)(AS007) at 1:500 dilution. Blue: DAPI for nuclear staining. High pressure antigen retrieval performed with 0.01M Citrate Buffer(pH 6.0) prior to IF staining.