

A23579

Leader in Biomolecular Solutions for Life Science



# Dopamine beta Hydroxylase Rabbit mAb

Catalog No.: A23579 **Recombinant**

## Basic Information

### Observed MW

75-80kDa

### Calculated MW

69kDa

### Category

SMab Recombinant Monoclonal Antibody

### Applications

WB,ELISA

### Cross-Reactivity

Human

### CloneNo number

ARC3095

## Recommended Dilutions

**WB** 1:500 - 1:1000

**ELISA** Recommended starting concentration is 1 µg/mL. Please optimize the concentration based on your specific assay requirements.

## Contact

 [www.abclonal.com](http://www.abclonal.com)

## Background

The protein encoded by this gene is an oxidoreductase belonging to the copper type II, ascorbate-dependent monooxygenase family. The encoded protein, expressed in neurosecretory vesicles and chromaffin granules of the adrenal medulla, catalyzes the conversion of dopamine to norepinephrine, which functions as both a hormone and as the main neurotransmitter of the sympathetic nervous system. The enzyme encoded by this gene exists in both soluble and membrane-bound forms, depending on the absence or presence, respectively, of a signal peptide. Mutations in this gene cause dopamine beta-hydroxylase deficiency in human patients, characterized by deficits in autonomic and cardiovascular function, including hypotension and ptosis. Polymorphisms in this gene may play a role in a variety of psychiatric disorders.

## Immunogen Information

### Gene ID

1621

### Swiss Prot

P09172

### Immunogen

Recombinant protein (or fragment). This information is considered to be commercially sensitive.

### Synonyms

DBM; ORTHYP1; Dopamine beta Hydroxylase

## Product Information

### Source

Rabbit

### Isotype

IgG

### Purification

Affinity purification

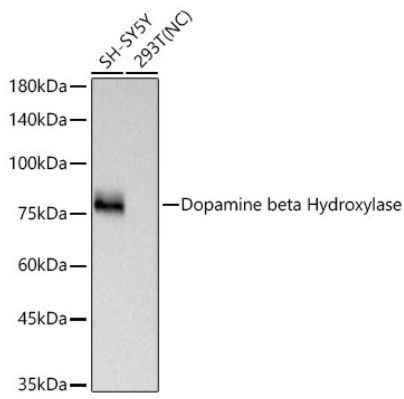
### Storage

Store at -20°C. Avoid freeze / thaw cycles.

Buffer: PBS containing 50% glycerol and 0.05% BSA, preserved with proclin300 or sodium azide (as specified on the Certificate of Analysis), pH 7.3.

## Validation Data

---



Western blot analysis of various lysates using Dopamine beta Hydroxylase Rabbit mAb (A23579) at 1:1000 dilution incubated overnight at 4°C.

Secondary antibody: HRP-conjugated Goat anti-Rabbit IgG (H+L) (AS014) at 1:10000 dilution.

Lysates/proteins: 25 µg per lane.

Blocking buffer: 3% nonfat dry milk in TBST.

Detection: ECL Basic Kit (RM00020).

Negative control (NC): 293T

Exposure time: 30s.